

# Results:

## 1955 World-Wide DX Contest

**Frank Anzalone, W1WY**

14 Sherwood Rd., Stamford, Conn.

We didn't realize what we had let ourselves in for when we offered to give our Hon. Editor a hand in checking the 1955 CQ World Wide DX Contest. There is a terrific amount of detailed work connected with one of these contests, and this was no exception. Our committee, although small and new in contest work, fortunately was not short on DX savvy.

We believe the rules as set down by Larry LeKashman, W9IOP, are good ones, and they were followed to the best of our judgment. We hope any errors, and there are bound to be some, will be forgiven.

There were three points in the rules that confused some of the contestants.

Para. C/ under #8 Awards. Section II, was inadvertently omitted. Some European participants wondered if they were permitted All Band operations. Luckily they disregarded this omission and proceeded to run up fine All Band scores.

Section IV, a new addition, also had some of the boys confused. They wanted to know if, besides operating a minimum of 5 hours, it was also necessary to show 50 contacts. Of course not. It was one or the other.

#9, SCORING, Section I. This was the biggest point of confusion, probably because of the ruling of previous years, according to which an All Band entree was also eligible for all the other Single Band awards. Usually the "hot

shot" who ran up a big All Band score would also win a major portion of the Single Band awards. Here the Committee took a firm stand. It was agreed that the intent of this rule was to eliminate this unfair duplication and, therefore a station would be eligible for ONE AWARD only. If a log was submitted for two or more bands, it was judged for an All Band award, unless however, a contestant requested that he be judged for a specific Single Band only. We are sure that this will meet with the approval of the 1,005 participants who submitted logs.

As in all DX contests, there was a cry, and justifiably so, for a power multiplier. Our Contest offers seven separate awards for each country or section, making it a big field with room for everybody. The final results show that all the winners were not the high-powered boys, and some were really low-powered.

It was decided to give separate awards to stations operated by members of the Armed Forces in Germany and Japan.

Very few Clubs observed the requirement of submitting a list of club participants in order to be eligible for an award. However, the Committee took on the extra work, and Club scores will be found listed.

We will not bore you with statistics, as the listed scores and groupings speak for themselves. However, there are a few points worthy of special mention.



All the logs were not this amusing to (left to right) Ed Hopper W2GT, Ray Yard W2DKF, Frank Anzalone W1WY, Charley O'Brien W2EQS, and Ben Lazarus W2JB. M. A. McIntire W2BO and Richard Rowe W1ODW were home working on the tough ones.

In the Phone Section, Single Operator CX2CO topped them all. Ricardo set what we believe is a new record in this category. W6YY had the highest score for W's—a real performance for a West Coast station that is at a decided disadvantage, especially on the lower frequency bands. VQ4RF was disappointed in that he did not break 100,000, but his score on 21 mc. was easily tops for a single band. LU1BK must also be given credit for his fine showing on 28 mc., which is an indication of things to come on 10. W2HJR and its crew did a bang-up job in the multi-operator section, and it was only the multiplier on the lower frequency bands that kept the final score from reaching astronomical figures.

In the CW section, Single Operator, W2HJR with W3GRF at the key, is King for 1955 with the highest score ever turned in by a W but K2EDL gave him a run for it. The rest of the honors are evenly divided among the old reliables and newcomers. It was W3LMM at the key that made it possible for W3VKD to make the Top Ten. Old reliable KH6IJ with 961 QSO's was way ahead in that department, and W3JTK topped everybody with 102 different countries.

In the Single Band competition the highest scores you will note were turned in by the boys of the U.S.A. Take a look at W4KFC on 14 mc. Also W2AGW, W3JTK and G2LB. Another fine performance was W2WZ on 21 mc. and W8FXG on what seemed a "dead" 40 meter band.

Some interesting comparisons are some of the close scores. To mention a few, W5CKY and W5KC on 21 mc., DJ1BZP and DL1JW

**PAØUN**—David turned in the 3rd highest score in the World on CW with this efficient and compact rig.



on All Band. But for a real close one, look up the scores of JA6AA, JA6AD and JA1AA on 14 mc.

KV4BK bemoaned the fact that it was "no contest" competing against KV4AA. He will be surprised to find out he is All Band winner for the Virgin Islands. Dick decided to go for the Single Band only this year.

All the winners were not blessed with QRO rigs.

VE7AIH had only 30 watts with primary supply from a gas-powered generator. You will note many other winners in the "A" power classification. Lowest claimed power used was 5 watts by SM4GVH and SP8CK.

Look over the scores carefully, fellows, and start making plans for 1956. There are many choice spots that are yours practically for the asking.

Your committee consisted of Frank An-



**W6YY**—John had the highest 'fone score of all the Ws. His indeed is a dream layout. What you see is only the receiving position; the transmitter is on the other side of the room.

**Transmitter** —Four 1 KW PA's driven by a 32V-3; 813 on 1.8 Mc.

**Receivers** —75A2 and HRO-60 plus DB-23 pre-selector.

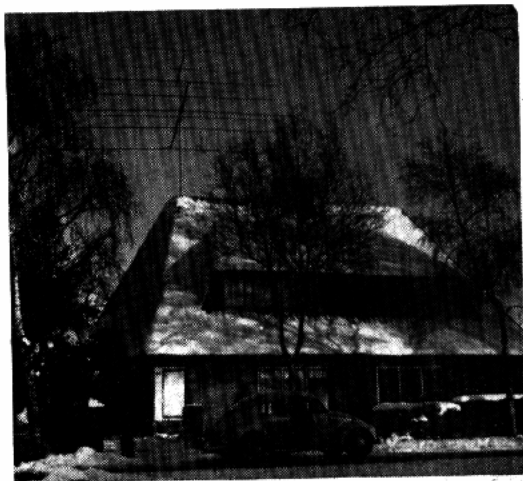
**Antennas** —Vertical top-loaded on 1.8 and 3.5 Mc.; Ground-plane on 7; 5-el beam on 14, 70' high; 3-el on 15, 75' high and 3-el on 10, 81' up.

**PAØUN**—His home, his car and his rotary. The 28 Mc job is at the top. 9 ft. below are the 21 and 14, the 21 being mounted in front of the 14-mc array.

**Transmitter** —PP 807s with a new multi-band final tank, bandpass coupler and antenna tuner.

**Receiver** —AR-88.

**Antennas** —3-el beams on 28, 21 and 14 Mcs.; and 400-ft. long wire for 7 and 3.5 Mcs.



## FONE

### Top For Each Band

28 mc.	— LU1BK	— 26,152
21 mc.	— VQ4RF	— 94,848
14 mc.	— W3JNN	— 60,713
7 mc.	— JA1VP	— 1,344
3.5 mc.	— OZ8KR	— 560

## CW

### Top For Each Band

28 mc.	— W3MDE	— 3,392
21 mc.	— W2WZ	— 66,222
14 mc.	— W4KFC	— 171,776
7 mc.	— W8FXG	— 30,149
3.5 mc.	— G5MP	— 5,760

zalone W1WY, M. A. McIntire W2BO, Ben Lazarus W2JB, Ray Yard W2DKF, and Charlie O'Brien W2EQS. We owe thanks to Ed Hopper W2GT and Richard Rowe W1ODW for their

assistance. All around cooperation has enabled us to get these scores out to you at the earliest date since the inception of these World Wide DX Contests.

# Phone Section Single Operator

Number groups after call letters denote following: Final score, number of QSOs, number of Zones and number of Countries. Letter designates power used. A—Up to 30 watts; B—Up to 125 watts; C—Up to 500 watts. D—Over 500 watts. *Winners in Bold-Face Type.*

## NORTH AMERICA

### UNITED STATES

<b>All Band</b>			
WIAP	9000	58	21 39 -
W1WY	1450	23	7 18 C
<b>28 mc.</b>			
W1ONV	120	6	5 5 A
<b>21 mc.</b>			
W1RIL	68,978	264	26 65 C
<b>14 mc.</b>			
W1QJR	10,094	81	14 35 B
<b>7 mc.</b>			
WIAPA	130	7	5 5 C
<b>21 mc.</b>			
K2BHP	26,599	146	19 48 C
W2DDT	8,944	72	13 30 B
W2UTH	2,232	31	6 18 -

<b>14 mc.</b>			
K2KAK	5,060	48	16 28 -
K2DEM	72	5	2 4 -
<b>All Band</b>			
W3ECR	113,669	226	65 132 D
<b>28 mc.</b>			
W3ZEQ	2,400	30	10 20 C
W3EKO	814	15	9 13 B
<b>21 mc.</b>			
W3ZPO	4,290	51	8 22 -
W3UEN	802	30	4 10 B
<b>14 mc.</b>			
W3JNN	60,713	208	31 78 D
W3PMC	429	11	7 8 -
<b>All Band</b>			
W4KWY	111,300	240	57 118 D

W4TWW	26,663	107	30 61 B
W4YK	1,518	24	18 15 -
<b>21 mc.</b>			
W4NQM	80,160	297	25 71 D
W4DOU	18,360	102	20 48 B
W4KKG	9,456	75	17 31 -
W4GUV	1,606	23	14 18 B
W4EEO	198	6	5 6 -
<b>14 mc.</b>			
W4AIX	5,452	48	16 31 C
W4NZM	3,784	39	17 26 -
W4HKJ	2,310	34	12 23 C

<b>All Band</b>			
W5DJH	39,603	132	54 75 D
W5LFG	5,934	54	35 34 B
<b>28 mc.</b>			
W5ZFS	361	15	7 6 B
<b>21 mc.</b>			
W5KC	12,036	83	19 40 B
W5SU	3,348	36	14 22 -
W5QF	2,622	33	15 23 B
W5KNA/5	16	2	2 2 B
<b>14 mc.</b>			
W5LPG	10,140	78	21 39 C

<b>All Band</b>			
W6YY	194,484	353	92 136 D
K6EWL	2,442	29	15 18 D
K6GSI	2,000	31	13 12 -
K3DDO	413	14	11 9 -
<b>21 mc.</b>			
W6BUD	20,002	106	26 47 D
W6ZZ	1,972	28	13 16 B
<b>14 mc.</b>			
W6VYZ	40,230	172	31 59 D
W6VSS	37,910	187	29 56 D
W6LTY	15,500	107	23 39 -
W6GYM	2,793	25	25 24 D

<b>All Band</b>			
W7HRH	11,061	67	31 38 D
W7WLB	3,666	30	15 16 C
<b>28 mc.</b>			
W7RT	2,660	36	13 15 C
<b>3.8 mc.</b>			
W7JLE	56	5	4 4 B

<b>All Band</b>			
W8JIN	137,431	271	71 132 D
W8NXP	63,504	163	64 104 C
W8DUS	11,709	61	31 47 D
<b>21 mc.</b>			
W8UPN	36,328	175	23 53 D
W8KZT	23,652	118	24 49 C
W8YIN	15,714	107	17 37 B
<b>14 mc.</b>			
W8QAD	6,321	54	19 30 C

<b>All Band</b>			
W9EWC	111,300	225	79 133 D
W9GWK	2,562	31	18 24 B
W9IRH	1,138	28	13 16 A
<b>21 mc.</b>			
W9RBI	9,120	60	17 43 D
W9HCX	88	5	4 4 -
<b>14 mc.</b>			
W9EUD	10,366	63	26 45 C
W9BU	450	15	6 9 C
<b>21 mc.</b>			
W9LRU	24,960	122	26 52 D
W9GK	2,016	26	10 18 C
<b>14 mc.</b>			
W9MXX	812	21	14 14 -

### CANADA

<b>All Band</b>			
VE4RO	44,704	146	53 74 -
VE7AH	12,222	97	28 35 A
V6OU	30,015	226	31 56 B
Y6BN	19,020	186	26 34 C
<b>21 mc.</b>			
VE2AFC	4,830	47	15 27 -
<b>14 mc.</b>			
VE3ARS	17,816	102	23 45 C
VE5VZ	408	14	9 8 C

### ALASKA

<b>All Band</b>			
KL7ZG	26,110	176	26 44 D
KL7AGU	10,027	171	16 21 C
KL7RZ	1,100	36	11 11 B

### BAHAMAS

<b>All Band</b>			
VP7NG	13,130	202	27 38 B

### CANAL ZONE

<b>All Band</b>			
KZ5KA	28,320	254	29 51 C
<b>21 mc.</b>			
KZ5DG	3,834	68	7 20 B

### CUBA

<b>All Band</b>			
CO2BL	219,904	362	81 175 C
CO8UL	14,210	123	29 41 ..
CO8SA	13,545	171	29 34 B
<b>14 mc.</b>			
CO2OZ	43,510	227	25 70 B

### GREENLAND

<b>14 mc.</b>			
OX3RC	15,504	151	14 34 B



**CX2CO—Ricardo is this year's Top 'Fone Man.**

The trophy you see is probably one he won for another equally high DX achievement.

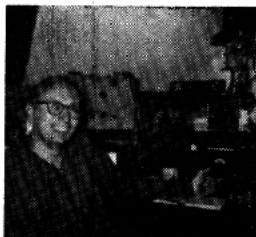
Transmitter — 1 KW to PP 4-250A's.

Receiver — National NC-240D.

Antennas — 3-el rotaries on 10, 15 and 20.

Long wire on 40 and 80.

[continued on page 92]



W4KFC—Vic turned in the highest score of all the Single Band CW entries—just another routine achievement for him. He runs a "full gallon" on 14 Mc. to a 3-el close-spaced beam on a 50-ft. mast.

**GUATEMALA**  
All Band  
TG9AD 118,846 350 63 119 B  
**NICARAGUA**  
All Band  
YN4CB 19,090 160 42 41 B

### AFRICA

**ALGERIA**  
All Band  
F8DD 33,936 205 15 41 —  
F8JY 20,580 118 23 57 —

**ANGOLA**  
14 mc.  
CR6AU 8,507 75 19 28 C

**CANARY ISLANDS**  
All Band  
E8BB 21,627 102 33 48 A  
21 mc.  
E8AX 11,016 79 15 38 A

**ETHIOPIA**  
14 mc.  
ET3LF 216 8 3 8 —

**KENYA**  
All Band  
VQ4BU 855 17 10 9 —  
21 mc.  
VQ4RF 94,848 325 29 75 C

**LIBERIA**  
21 mc.  
EL2A 6,960 63 16 24 —

**MADAGASCAR**  
14 mc.  
FB8BC 1,328 30 8 8 A

**MADEIRA**  
All Band  
CT3AN 4,635 39 18 27 B  
CT8AI 738 15 6 12 —

**MOZAMBIQUE**  
All Band  
CR7AF 3,696 43 17 19 B

**NORTHERN RHODESIA**  
All Band  
VQ2AS 17,935 91 31 54 B

**SPANISH MOROCCO**  
All Band  
EA9BH 7,175 61 25 16 —  
14 mc.  
EA9BC 25,344 140 17 47 —

**TANGANYIKA**  
21 mc.  
VQ3ES 34,602 178 23 50 —

**UNION OF SOUTH AFRICA**  
All Band  
ZS6AB 9,291 57 21 36 —  
ZS9OA 6,776 54 25 31 —  
14 mc.  
ZS5JM 26,040 126 25 45 —

### ASIA

**BURMA**  
14 mc.  
XZ20M 4,628 60 14 17 —

**HONG KONG**  
21 mc.  
YS8CW 35,441 331 24 59 C  
YS8AE 13,800 86 20 40 B

**INDIA**  
All Band  
VU2EJ 22,022 112 28 49 B  
14 mc.  
VU2AK 5,831 54 19 30 B

**ISRAEL**  
All Band  
4X4DK 319,700 481 66 164 C  
4X4GB 137,251 345 40 113 —  
4X4FV 136,620 333 37 101 —

**JAPAN**  
All Band  
JA1CJ 18,954 125 20 34 B  
JA1ANG 4,730 44 19 24 A  
JA1CR 48 7 4 4 A  
21 mc.  
JA3BB 26,325 200 18 27 C  
JA3CO 8,568 74 15 27 C

**14 mc.**  
JA6HK 20,835 163 19 26 B  
JA7DK 1,360 25 9 11 A  
JA6AV 792 20 8 10 —  
7 mc.  
JA1VP 1,344 28 8 8 B  
JA1AGU 1,014 27 7 6 C  
JA1QI 72 7 2 2 B

**MACAU**  
21 mc.  
CR9AH 9,440 87 17 23 B

**MALAYA**  
21 mc.  
VS2BD 33,968 142 28 60 C

**SINGAPORE**  
All Band  
VS1DU 4,956 51 17 25 A

### EUROPE

**AUSTRIA**  
All Band  
OE5CK 109,726 322 51 115 B

**BELGIUM**  
All Band  
ON4YI 26,950 148 33 65 —  
ON4DH 25,520 111 33 55 —  
14 mc.  
ON4LI 6,344 73 14 38 B  
ON4XW 1,416 52 5 19 A

**CORSICA**  
14 mc.  
F9VTF/C 308 10 5 6 —

### TOP TEN

#### Single Operator—Fone

CX2CO	341,214	CO2BL	219,904
4X4DK	319,700	G3AWZ	209,508
KH6IJ	250,800	W6YY	194,484
EA2CQ	240,240	4X4GB	157,251
HC1ES	221,100	W8JIN	137,431

### CZECHOSLOVAKIA

28 mc.  
OK1AA 3,503 41 13 18 A  
21 mc.  
OK1JX 9,989 82 16 33 B  
OK1FC 612 17 8 9 A

### DENMARK

All Band  
OZ5K 93,786 201 51 96 B  
OZ7HT 41,376 262 27 69 B  
OZ3Y 12,600 82 28 35 C  
OZ7BG 6,720 68 19 41 C

28 mc.  
OZ7P 60 5 2 2 A  
14 mc.  
OZ70P 15,183 150 18 45 —  
OZ4FA 5,289 46 13 28 B  
3.5 mc.  
OZ8KR 560 40 2 12 B

**EIRE**  
14 mc.  
E17M 17,542 184 16 33 C

### ENGLAND

All Band  
G3AWZ 209,508 387 73 148 B  
G3FXB 66,766 218 43 90 B  
G2AJB 8,960 73 70 128 B  
G3HSM 1,612 27 11 20 —  
G3HWY 1,222 33 8 18 —  
GSGEN 1,161 20 11 18 B

21 mc.  
G4MJ 35,192 174 24 54 —  
14 mc.  
G3AFM 2,320 67 6 23 B

### FINLAND

All Band  
OH5QN 19,680 146 25 55 B  
21 mc.  
OH2XK 299 18 4 9 —  
14 mc.  
OH6QI 8,786 113 14 32 B  
OH2XA 1,798 50 6 23 C  
OH2OJ 1,232 33 7 21 C  
OH3BA 817 34 4 15 B  
OH6VW 731 38 3 14 —

### FRANCE

All Band  
F9RM 69,888 251 50 106 B  
F9YU 24,768 155 23 73 —  
F8XP 13,082 94 16 46 B  
F8ZW 10,325 83 19 40 —  
F9YV 8,094 87 14 43 —  
F8CS 3,192 46 11 17 B  
F8NE 2,838 34 16 27 B  
F8NG 2,280 36 10 20 B  
F8EY 2,190 30 12 13 —  
21 mc.  
F8CW 13,338 88 19 38 B  
F8EG 1,725 27 10 15 B  
F8VK 461 11 7 9 B

### GERMANY

All Band  
DL7BA 65,560 174 54 95 C  
DJ1BZP 61,688 274 33 55 C  
DL1JW 21,074 116 31 51 B  
DL3OC 6,384 74 17 39 B  
DLTDE 4,212 38 19 20 B

### All Band

DL4EU 96,644 254 47 101 C  
DL4ZC 28,584 205 34 72 C  
DL4IO 8,011 64 26 41 —  
21 mc.  
DL3NE 42,630 216 25 45 —  
DJ2IV 480 14 6 9 A

14 mc.  
DL4VF 30,310 175 25 70 —

### HUNGARY

All Band  
HA5KBC 31,828 175 36 73 B

14 mc.  
HA5AC 240 15 2 8 —

### ITALY

All Band  
II1AJ 109,114 307 58 120 —  
II1BDV 106,602 281 52 111 —  
II2CT 40,250 197 31 81 B  
II1AHW 4,876 56 16 106 —  
21 mc.  
II1CHJ 35,003 185 26 45 —  
14 mc.  
II1ASM 13,510 72 24 46 —  
II1BOB 11,136 137 15 43 —  
II1CLW 11,651 94 19 42 B  
II1GZ 2,044 57 7 21 —

### MALTA

All Band  
ZB1EB 20,790 216 16 54 —

### NETHERLANDS

All Band  
PA0BA 21,294 183 20 58 —  
PA0SNG 9,381 145 11 48 —  
PA0EEM 5,994 90 9 45 —  
21 mc.  
PA0KX 21,775 118 23 44 —  
PA0HJK 1,975 38 9 16 —  
14 mc.  
PA0UA 18,156 117 22 46 C

### NORWAY

All Band  
LA5YE 16,947 104 26 37 C  
LA2MA 196 14 4 10 —  
14 mc.  
LA9AD 2,024 44 2 10 —  
**POLAND**  
All Band  
SP5AH 2,706 52 10 23 —  
14 mc.  
SP5KAC 24,480 243 16 52 D  
SP5FM 8,352 138 12 36 B

### TOP TEN

#### Single Operator—CW

W2HJR	517,030	W8JIN	336,832
K2EDL	474,586	HB9NL	328,735
PA0UN	429,488	W3VKD	304,878
KH6IJ	395,184	W7KVV	300,645
W4DHZ	354,438	OE5JK	292,825



W8JIN—Jim can always be found among the leaders in any DX contest. This year he made Top Ten on both 'Fone & CW. Transmitter—PP 250THs, 813 Driver and Collins 310B Exciter. HRO-5TA1 receiver and ground-planes on 3.5 and 7 Mcs.; 3-el beams on 14, 21 and 28, plus a 3.5-Mc doublet.



HZ1HZ—Ahmed gave many a contestant a rare one on CW. Maximum power used was only 100 watts from a Hallcrafters HT-20 and Harvey-Wells Bandmaster. Two receivers, HRO-60 and BRT-400 G.E.C. plus long wire, folded dipoles, Lazy H, 8JK and verticals.

**PORTUGAL**

**All Band**  
CT1PK 106,237 301 49 100 C

**ROUMANIA**

**All Band**  
Y03LM 19,276 185 19 60 A

**SPAIN**

**All Band**  
EA2CQ 240,240 427 69 171 C

**28 mc.**

EA4EP 7,471 85 12 19 -

EA7CP 2,384 58 6 10 -

**21 mc.**

EA3IX 8,064 121 12 30 -

EA7FI 6,045 119 11 20 -

**14 mc.**

EA7EV 30,448 155 24 64 -

EA4CX 21,770 187 18 52 C

EA2CR 12,312 113 16 38 B

**SWEDEN**

**All Band**  
SM5ARL 39,606 162 41 82 C

SM3RIZ 30,210 245 20 75 -

SM5DW 27,472 147 29 73 -

SM4BTP 11,900 108 20 48 B

SM4AOK 2,331 35 13 24 B

**14 mc.**

SM6SA 38,844 217 24 54 -

SL6CN 2,198 51 8 23 B

SM6LBR 1,518 34 6 17 -

**SWITZERLAND**

**All Band**  
HB9QU 7,865 62 22 33 B

**TRIESTE**

**All Band**  
I1BNU 32,017 173 30 71 -

**WALES**

**14 mc.**  
GW3FPH 5,520 114 10 30 B

**OCEANIA**

**AUSTRALIA**

**All Band**  
VK2GW 12,352 81 29 35 B

VK3ATN 115,475 286 57 92 B

VK3BW 1,400 25 19 11 -

VK3LC 13,847 81 25 36 -

VK3VO 4,464 44 16 20 -

VK6RU 8,322 62 25 32 B

**21 mc.**

VK4EL 4,920 50 15 25 B

**HAWAII**

**All Band**  
KH6IJ 250,800 614 62 70 D

KH6PM 101,654 339 51 55 C

KH6SP 30,888 218 26 26 C

**NEW CALEDONIA**

**14 mc.**  
FK8AO 741 23 8 11 B

**NEW ZEALAND**

**All Band**  
ZL1BY 91,264 261 52 72 B

ZL1MQ 49,932 167 48 66 B

**RYUKYU IS.**

**All Band**  
KR6QI 1,456 20 14 14 -

**21 mc.**

KR6CR 2,436 33 14 14 D

**SOUTH AMERICA**

**ARGENTINA**

**28 mc.**  
LU1BK 26,152 160 19 37 -

**14 mc.**  
LU7MAJ 6,500 66 16 24 B

**BRAZIL**

**All Band**  
PY2CK 105,080 169 54 131 D

PY2AHS 92,400 255 42 90 D

PY4RIJ 8,700 58 20 38 -

PY2BEL 5,564 46 21 31 -

**14 mc.**

PY1NC 27,144 130 23 55 -

PY4ZS 3,042 31 14 25 -

PY7VG 2,688 42 13 19 -

PY7MF 731 15 7 10 -

PY1RW 190 9 5 5 -

**21 mc.**

PY5GA 1,800 21 12 14 -

**CHILE**

**All Band**  
CE3DY 35,399 151 35 56 B

CF9AP 8,276 39 17 19 -

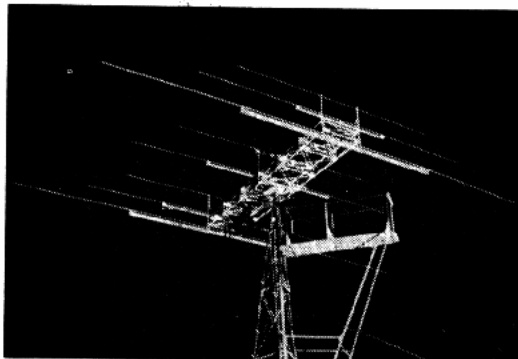
**COLOMBIA**

**All Band**  
HK3FV 47,880 192 31 59 -

HK4DF 39,060 150 38 55 B

**21 mc.**

HK1DZ 4,440 63 10 14 C



VK6RU's 10, 15 and 20-meter Rotary.

**TOP FIVE**

**Multi-Operator—Fone**

W2HJR 417,880 ON4SZ 170,912  
W3VKD 249,222 KA8AB 169,136  
DL4MW 163,582

**ECUADOR**

**All Band**  
HC1ES 221,000 475 59 111 B

**NETHERLANDS**

**WEST INDIES**  
**All Band**  
PJ2AA 9,576 67 26 31 C

**PARAGUAY**

**All Band**  
ZP5CF 19,092 107 28 46 -

**14 mc.**

ZP5CG 8,183 73 20 29 -  
ZP5JP 703 19 9 10 -

**VENEZUELA**

**All Band**  
YV5AB 71,934 218 47 67 -

**URUGUAY**

**All Band**  
CX200 341,214 555 73 149 D  
CX3BH 43,731 153 47 66 B  
CX2AY 6,669 80 18 21 -  
**28 mc.**  
CX5CE 1,160 20 10 10 -

**Phone Section**  
**Multi-Operator**

**NORTH AMERICA**

**UNITED STATES**

**All Band**  
W2HJR 417,880 616 79 169 D  
(W2HJR-W28KE-W2GLM)

W3VKD 249,222 421 78 141 D

(W3VKD-W3WPY)

W6AM 60,268 318 83 123 D

(W6AM-W6XNL-W6KPC-W6YMD)

W8NWO 56,885 156 60 95 C

(W8NWO-W8HMI)

W8NGO 51,408 167 42 77 C

(W8NGO-W8CLR)

W8EDK 25,577 110 30 57 B

(W8EDK-W8EDM)

W9AVJ 93,184 221 69 113 D

(W9PKW-W9GVZ-W9NZM)

W9OBY 5,796 55 31 38 -

(W9OBY-W9QVY-W9UXT)

**28 mc.**

W3KWH 18,090 96 20 47 -

(W3ZDW-W3SDY-W3MPK-W3KWH)

W8BKP 21,910 109 19 51 C

(W8BKP-W8WFB)

**21 mc.**

K6EVR 11,770 91 21 34 B

(K6EVR-K6ELX)

W6NWL 7,544 87 20 26 C

(W6NWL-K6CNL-K6LIU)

**14 mc.**

W6GRV 16,560 104 24 36 -

(W6GRV-W6BWM)

**CANADA**

**14 mc.**  
VE2ADX 1,254 37 9 13 C

(Club Station)

**ALASKA**

**All Band**  
KL7FAP 20,299 215 16 37 D

(W0LRU-KL7BOZ)

**MEXICO**

**14 mc.**  
XE1RE 3,955 78 15 20 -

**IRAQ**

**14 mc.**  
Y12AM 18,297 115 16 41 B

(Club Station)

**ASIA**

**All Band**  
K8AB 169,136 470 50 74 D

(W1TTA-W8DUS)

KA2NY 122,573 354 47 74 D

(Club Station)

**EUROPE**

**BELGIUM**

**All Band**  
ON4SZ 170,912 367 64 132 C

((ON4SZ-ON4UK))

**CHANNEL IS.**

**14 mc.**  
G6CFQ 33,034 175 24 59 -

(GC2FMV-GC3FSN)

**FINLAND**

**All Band**  
OH2TI 13,838 112 21 53 B

(Club Station)

**GERMANY**

**All Band**  
DL4MW 163,582 384 61 117 C

(DL4MQ-DL4XY)

**14 mc.**  
DL4AK 24,674 156 24 49 C

(DL4AT-DL4PQ-DL4UB)

DLAY 21,735 155 20 49 C

(DL4CB-DLAY)

**GREECE**

**All Band**  
SV0WT 107,952 343 52 121 B

(SV0WT-SV1AB)

**TOP FIVE**

**Multi-Operator—CW**

HA5KBA 326,899 KA8AB 272,718  
W6AM 299,472 W9AVJ 272,073  
DL4MW 262,908



**HB9NL**—Frank surprised even himself with his fine All-Band CW score. A single 813 with 200 watts input, home-made triple-conversion receiver and a 636-ft. long wire was all he used.

**HUNGARY**

**All Band**  
**HA5KBA** 64,740 324 35 95 D  
 (Club Station)

**ITALY**

**All Band**  
**IICCO** 40,626 210 33 78 B  
 (I1CCO-I1SXZ-II-10.011)

**NETHERLANDS**

**All Band**  
**PI1RRS** 11,403 116 18 45 C  
**PA0NN** 1,760 54 6 26 -  
 (PA0NN-PA0IN)

**21 mc.**  
**PA0AGR** 16,536 128 19 33 -  
 (PA0AGR-PA0UAN)

**SWEDEN**

**All Band**  
**SM3AKW** 9,765 75 23 40 B

**OCEANIA**

**CAROLINE IS. (WESTERN)**  
**K26CG** 11,200 116 18 22 C

**RYUKYU IS.**

**14 mc.**  
**KR6PR** 13,300 141 17 21 C  
 (KR6PR-KR6QS)

**CW Section  
 Single Operator**

**NORTH AMERICA**

**UNITED STATES**

**All Band**  
**W1ODW** 127,038 265 69 118 C  
**W1AZA** 91,168 226 48 100 C  
**W1BIH** 81,920 230 38 93 D  
**W1CJH** 57,743 185 37 76 D  
**W1PWK** 34,435 124 27 70 C  
**W1ZD** 1,768 25 14 20 D  
**W1PLI** 128 6 3 5 B  
**28 mc.**  
**W1WY** 2,400 32 11 19 A  
**W1QJL** 800 18 5 11 B  
**21 mc.**  
**W1WLW** 33,950 173 20 50 B  
**W1CWT** 22,326 127 18 43 D  
**W1UGW** 8,600 78 11 29 B  
**W1NLM** 4,988 50 13 23 C  
**14 mc.**  
**W1QJR** 43,852 208 23 53 D  
**W1KBY** 34,740 138 27 63 D  
**W1HZ** 33,820 123 30 70 D  
**W1TYQ** 29,790 121 28 62 D  
**W1JDE** 19,800 106 19 47 D  
**W1DHO** 11,424 75 19 37 B  
**W1AWA** 7,353 65 14 29 -  
**W1ZTZ** 2,924 37 12 22 -  
**7 mc.**  
**W1APA** 4,408 66 12 26 C  
**All Band**  
**W2HJR** 517,030 620 97 201 D  
**K2EDL** 474,586 556 93 206 -  
**W4IYD/2**  
 102,076 237 60 110 D  
**W2EQS** 74,580 210 61 104 C  
**W2AZS** 46,720 96 41 84 D  
**W20TC** 40,052 117 42 82 C

**W2PTH** 22,493 97 27 56 - C  
**W2KLE** 10,732 71 24 10 C  
**W2CJM** 6,389 53 20 33 C  
**W2EVH** 1,961 25 16 21 B  
**W2LRL** 1,852 21 10 18 -  
**K2EDM** 946 19 8 14 -  
**K2KID** 806 19 12 14 C  
**28 mc.**  
**K2KFP** 2,943 37 8 19 B  
**K2HZZ** 2,937 33 7 14 -  
**21 mc.**  
**W2WZ** 66,222 320 24 54 D  
**W2DJT** 24,066 141 18 43 B  
**W2RII** 20,838 108 22 47 C  
**K2HVN** 20,034 116 21 42 C  
**W2PZI** 6,475 62 11 26 -  
**14 mc.**  
**W2AGW** 149,562 411 34 92 D  
**W2ABM** 24,806 118 26 53 D  
**W2QJL** 19,304 85 16 40 C  
**W2DOD** 8,424 64 16 36 C  
**W2DKF** 6,278 52 17 26 D  
**W2ZXL** 3,002 31 15 23 C  
**W2PFE** 1,611 21 13 16 -  
**W2FXZ** 903 15 6 15 C  
**W2DPTL** 690 16 9 14 B  
**7 mc.**  
**W2HZY** 5,520 50 14 32 D  
**All Band**  
**W3VKD** 304,878 477 81 157 D  
**W3MFP** 145,323 264 60 141 D  
**W3ADZ** 85,348 140 36 78 D  
**W3NCF** 10,800 68 26 46 C  
**W3MDO** 10,368 55 19 45 C  
**W3MDO** 6,943 47 16 37 C  
**W3UZZ** 5,875 41 16 31 -  
**W3ZRS** 2,001 24 13 16 D  
**W3RRI** 1,840 28 5 17 -  
**W3ANZ** 1,840 28 5 17 -  
**W3IVM** 1,537 22 11 18 -

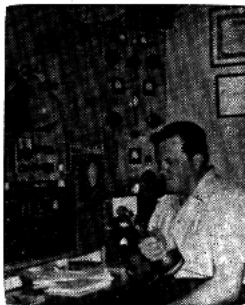
**28 mc.**  
**W3MDE** 3,392 36 9 23 -  
**W3MFI** 42,840 215 22 48 C  
**W3AYS** 20,736 147 22 50 B  
**W3UCHN** 193 9 2 7 B  
**14 mc.**  
**W3JTK** 154,947 404 35 102 D  
**W3JTC** 108,295 329 33 88 D  
**W3JNN** 102,382 291 34 93 D  
**W3RBE** 30,795 129 29 60 D  
**W3FMC** 20,580 93 25 50 -  
**W3KQD** 1,457 35 12 19 -  
**W3YOZ** 169 12 6 7 -  
**1 mc.**  
**W3CPB** 2,175 28 10 19 C  
**W3DLI** 24 6 4 2 B  
**3.5 mc.**  
**W3EIS** 1,680 40 9 15 C  
**W3SIJ** 90 5 5 5 B  
**All Band**  
**W4DHZ** 354,438 474 76 185 D  
**W4KVX** 199,080 358 75 135 D  
**W4KXV** 149,944 281 66 135 C  
**W4LZU** 104,437 218 70 133 D  
**W4WVY** 66,589 180 44 80 C  
**W4STM** 1,767 26 12 19 B  
**W4PNK** 74,085 208 38 88 D  
**21 mc.**  
**W4KGG** 20,394 116 21 45 -  
**W4YK** 6,136 42 15 35 -  
**W4GUV** 3,045 40 15 29 B  
**W4DXL** 1,320 25 8 14 B  
**W4GCB** 512 15 7 9 B  
**14 mc.**  
**W4KFC** 171,776 481 33 95 D  
**W4AIX** 40,376 151 30 68 D  
**W4IMI** 6,200 52 17 33 D  
**W4GFI** 4,212 44 13 26 C  
**W4JBO** 2,592 36 11 21 B  
**W4ZQK** 143 9 5 11 B  
**W4RKL** 28 3 2 2 C  
**All Band**  
**W5ZD** 87,906 243 59 88 D  
**W5QP** 18,172 91 30 47 C  
**W5RRR** 15,168 82 36 43 B  
**W5DXW** 14,364 89 41 45 B  
**W5CAY** 9,514 73 34 37 C  
**21 mc.**  
**W5CKY** 32,984 155 23 53 D  
**W5KC** 32,446 161 21 51 B  
**W5GTD** 12,141 64 23 48 -  
**W5LHA** 1,960 23 15 20 B  
**W5KNA/5** 924 18 9 12 B  
**28 mc.**  
**W5CEG** 364 15 7 6 -  
**14 mc.**  
**W5MY** 13,317 82 25 44 D  
**7 mc.**  
**W5FWA** 621 19 10 13 C  
**All Band**  
**W6ITA** 207,519 353 82 139 D  
**W6RWV** 146,970 279 77 130 D  
**W6YUP** 72,228 186 64 92 D  
**W6UED** 57,645 192 62 73 -  
**W6ALQ** 54,752 193 56 62 D  
**K6EVL** 45,602 138 49 102 D  
**W6BVG** 40,368 139 50 66 D  
**W6BYY** 37,250 128 55 70 B  
**W6ID** 19,980 83 40 50 D  
**W6NKR** 19,624 84 39 49 C  
**W6WGU** 17,940 94 39 38 C  
**W6WLI** 9,920 70 32 32 D  
**W6IPH** 8,880 65 30 30 C  
**W6BIL** 5,656 45 25 31 D  
**K6JDA** 3,036 37 23 21 B  
**K6DDO** 2,464 39 25 19 -  
**W6BY** 1,600 26 12 13 D  
**28 mc.**  
**W6DYY** 1,092 21 11 10 D  
**21 mc.**  
**W6TZD** 27,790 154 23 47 D  
**W6VE** 10,972 112 22 41 D  
**W6EPR** 11,607 82 19 34 D  
**W6NWL** 10,700 90 20 30 C  
**W6ZZ** 5,534 47 18 24 B  
**W6MFP** 5,328 57 17 23 D  
**W6UYV** 1,628 16 8 9 C  
**14 mc.**  
**W6VSS** 56,742 220 31 67 D  
**W6BXL** 41,952 178 30 62 D  
**W6KSM** 21,164 108 28 46 D  
**W6BZE** 19,278 97 29 52 D  
**W6LVA** 6,732 61 19 25 D  
**K6DNI** 5,480 62 17 23 D  
**W6MKH** 2,695 38 17 18 D  
**K6OIZ** 633 25 9 8 C  
**W6WSV** 80 7 4 4 B  
**7 mc.**  
**W6BYB** 13,865 104 25 34 D  
**W6TKX** 8,225 87 22 25 -  
**W6POV** 4,515 60 16 19 C  
**K6CCT** 1,944 40 13 14 C  
**All Band**  
**W7KVU** 300,645 482 106 149 D  
**W7VY** 161,416 345 72 106 -  
**W7PQE** 69,306 195 62 80 D  
**W7CNM** 30,910 129 50 60 C  
**W7DAA** 22,950 98 34 56 D  
**W7IRZ** 10,647 75 30 33 D  
**28 mc.**  
**W7RT** 1,034 25 12 10 C

**27 mc.**  
**W7AHX** 14,685 101 19 36 C  
**14 mc.**  
**W7ASG** 32,810 150 26 59 -  
**W7GWD** 21,681 114 27 46 C  
**W7TML** 5,310 37 19 25 -  
**W7WY** 1,207 32 9 8 B  
**W7OAZ** 798 25 10 11 C  
**W7EJD** 546 14 5 8 -  
**3.5 mc.**  
**W7JLU** 176 12 6 5 B  
**All Band**  
**W8JIN** 336,832 450 93 184 D  
**W8BKD** 179,630 298 82 148 D  
**W8RRQ** 147,628 262 82 139 C  
**W8WY** 125,566 251 60 112 D  
**W8JDS** 66,146 154 49 85 D  
**W8JJW** 28,017 108 40 59 -  
**W8ERK** 26,404 120 31 51 C  
**W8TJM** 13,962 69 30 48 -  
**W8UMR** 7,785 67 26 48 D  
**W8UV** 3,478 51 25 22 C  
**W8WVY/8** 1,458 20 12 15 C  
**W8MT** 99 5 4 5 B  
**21 mc.**  
**W8KZT** 16,309 96 20 41 -  
**W8SMK** 3,676 45 12 22 C  
**W8ESR** 3,608 30 15 26 B  
**W8RTP** 2,760 44 8 16 C  
**W8PCS** 1,525 23 8 17 C  
**W8DLZ** 989 16 8 15 B  
**14 mc.**  
**W8RBA** 61,132 190 32 84 -  
**W8GJ** 47,712 164 81 81 D  
**W8CRD** 37,944 150 27 66 -  
**W8RTL** 15,939 78 26 51 D  
**7 mc.**  
**W8FXG** 30,149 150 20 53 D  
**3.5 mc.**  
**W8AQ** 330 18 8 7 -  
**All Band**  
**W9HUZ** 196,912 311 90 158 D  
**W9RFB** 83,088 210 48 96 B  
**W9GUR** 41,754 131 44 79 C  
**W9NLI** 33,068 150 55 76 C  
**W9GWLK** 33,462 118 48 69 B  
**W9RJV** 29,980 113 46 67 C  
**W9PNR** 18,480 80 41 64 C  
**W9LNM** 17,827 77 38 53 -  
**W9RRI** 7,865 50 25 40 C  
**W9GAS** 4,236 33 28 39 C  
**W9TRH** 6,380 55 22 32 C  
**W9PQA** 2,345 30 13 22 C  
**W9GHI** 1,088 9 8 9 A  
**W9GLH** 888 17 10 14 B  
**21 mc.**  
**W9ABA** 35,002 168 22 52 D  
**W9PKR** 3,344 38 11 24 C  
**W9KLD** 2,403 37 10 17 B  
**W9RMT** 1,932 36 8 15 C  
**W9LJR** 396 11 4 8 -  
**W9ITC** 322 9 5 9 B  
**W9WVV** 140 7 4 6 A  
**14 mc.**  
**W9EU** 6,345 47 21 24 C  
**W9FDX** 3,452 33 17 28 C  
**W9BKP** 2,135 31 15 20 C  
**W9RCA** 260 18 7 6 B  
**All Band**  
**W0DAE** 91,136 204 68 110 D  
**W0RSL** 48,906 141 57 86 D  
**W0SO** 37,674 132 57 69 -  
**W0YCR** 31,980 134 54 69 D  
**W0ANF** 6,936 70 28 39 D  
**W0PCT** 3,690 41 19 26 C  
**W0RAT** 3,382 48 18 23 C  
**W0GAX** 912 28 19 19 -  
**21 mc.**  
**W0QTP** 4,800 45 14 26 B  
**W0DFF** 4,480 47 14 21 C  
**7 mc.**  
**W0VBS** 323 16 9 10 C

**ALASKA**  
**All Band**  
**KL7R** 8,740 210 28 18 C  
**14 mc.**  
**KL7GI** 1,748 64 9 10 B  
**KL7UM** 1,242 28 11 12 B  
**BAHAMAS**  
**All Band**  
**VP7NG** 32,550 437 24 38 B  
**BERMUDA**  
**All Band**  
**VP9BM** 67,900 463 34 66 -  
**CANADA**  
**All Band**  
**VE1EK** 16,592 123 25 43 A  
**VE2YA** 14,364 91 76 43 C  
**VE3BHS** 14,003 131 31 36 C  
**VE5PM** 2,700 58 20 16 B  
**VE7AK** 52,281 290 48 63 C  
**VO8U** 82,106 508 43 71 C  
**YO8N** 25,594 275 25 42 C  
**21 mc.**  
**VE2DR** 8,024 93 8 26 B  
**VE3DT** 6,622 67 14 29 C  
**VE3QE** 6,154 68 10 24 -  
**VE5TK** 4,424 125 14 14 C  
**VE7EH** 4,002 135 12 11 C



Left to right, JA3DY, JA3CM and JA3AB. Don't know if 3AB used the tower in the background to run up the highest score received from a JA. He did it on 21-mc CW.

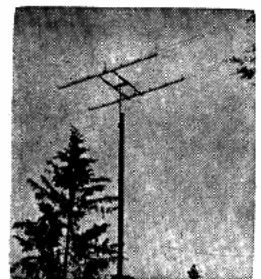


SM4BEC—Runner-up for 14-mc CW honors in Sweden. (What's he doing with a mike?)

14 mc.	VE2APH	6,435	68	17	28	-
	VR2YU	2,964	35	14	25	-
	VOIU	3,718	89	7	19	A
7 mc.	VE3AAZ	4,140	43	18	28	C
<b>CANAL ZONE</b>						
14 mc.	KZ5NB	4,650	140	14	17	B
<b>CUBA</b>						
All Band	C08DL	28,773	296	26	43	-
<b>GREENLAND</b>						
14 mc.	OX3RC	9,648	172	13	23	B
<b>PUERTO RICO</b>						
All Band	KP4JE	166,155	554	54	105	C
	KP4KD	100,320	232	52	108	C
	KP4ZW	18,340	109	25	45	-
14 mc.	KP4DH	26,112	432	15	32	C
<b>ST. PIERRE &amp; MIQUELON</b>						
14 mc.	FP8AP	5,111	247	7	12	-
<b>VIRGIN IS.</b>						
All Band	KV4BK	45,900	335	22	38	B
14 mc.	KV4AA	42,842	365	23	40	D

**AFRICA**

<b>ALGERIA</b>						
All Band	FA8DA	200,499	425	40	119	B
<b>ANGOLA</b>						
All Band	CR6AI	183,170	525	49	81	-
14 mc.	CR6AU	14,122	114	14	32	C
<b>BELGIAN CONGO</b>						
All Band	OQ5CP	57,570	211	35	66	A
14 mc.	OQ5HI	27,838	172	21	41	B
<b>CANARY IS.</b>						
All Band	E48BK	13,200	112	12	28	-
<b>ETHIOPIA</b>						
All Band	ET3AH	25,480	102	36	55	C



SM4BEC's 14-mc. Rotary.

14 mc.	ET3LF	6,125	52	17	32	-
<b>KENYA</b>						
All Band	VQ4RF	225,525	504	50	105	C
	VQ4KP	2,553	31	17	20	A
<b>LIBERIA</b>						
14 mc.	EL2L	2,046	62	6	5	C
<b>MADEIRA</b>						
All Band	CT3AB	6,480	54	14	26	-
<b>MOZAMBIQUE</b>						
All Band	CR2AF	8,976	104	15	18	B
	CR7LU	4,787	60	18	21	B
	CR7CI	1,960	82	12	16	-

<b>NORTHERN RHODESIA</b>						
All Band	VQ2AS	92,192	249	48	86	B
	VQ2GW	70,720	244	40	64	-
<b>SOUTHERN RHODESIA</b>						
All Band	ZE3JP	143,664	419	47	76	B
	ZE3JO	18,354	101	28	41	A
<b>SOMALILAND, BRITISH</b>						
14 mc.	VQ6LQ	49,500	266	20	46	C

<b>SPANISH MOROCCO</b>						
All Band	EA9AP	113,190	347	29	81	B
<b>SWAZILAND</b>						
14 mc.	Z87H	936	12	6	6	-
<b>TANGANYIKA</b>						
14 mc.	VQ3FN	40,525	219	22	46	-
<b>UNION OF SOUTH AFRICA</b>						
All Band	Z85U	125,188	382	53	66	-
14 mc.	Z85JM	59,348	279	27	47	-
	Z86AJQ	16,775	102	23	38	-
	Z84AK	5,944	58	18	18	B

**ASIA**

<b>AFGHANISTAN</b>						
14 mc.	Y1AIM	825	23	7	8	-
<b>BURMA</b>						
14 mc.	XY20M	6,501	73	15	18	-
<b>CEYLON</b>						
14 mc.	487KH	29,100	150	27	48	B
	487GE	25,134	158	26	45	B
	487MR	1,100	21	10	20	-
<b>HONG KONG</b>						
21 mc.	VS6AE	16,692	118	17	35	B
<b>ISRAEL</b>						
All Band	4X4CK	180,288	431	40	104	B
	4X4EV	130,000	334	35	95	-
<b>INDIA</b>						
All Band	VU2EJ	8,362	78	16	21	B
<b>IRAQ</b>						
All Band	Y12AM	28,341	147	20	47	B
<b>JAPAN</b>						
All Band	J1AIC	34,372	227	21	31	B
	J1AIX	20,690	125	23	35	D
	J1AEO	18,872	106	51	31	-
	J1ABM	6,660	63	19	17	-
	J1AAC	1,072	24	14	15	B
	J1AIB	1,311	25	9	10	B
	J1AIC	240	14	3	3	B
21 mc.	J1A3B	37,534	272	19	30	C
	J1AIC	10,726	119	12	19	B
	J1AIB	5,775	60	13	20	C
	J1AICJ	630	30	4	3	C
	J1A5G	420	20	4	3	B
14 mc.	J1A6A	29,850	206	20	30	C
	J1A6D	29,754	183	23	34	C
	J1A6A	29,677	175	25	34	C
	J1A6A	9,350	68	21	29	C
	J1A7R	5,490	66	14	16	B
	J1A7D	1,025	29	13	14	-
	J1A1G	880	15	11	11	-
7 mc.	J1A5B	3,344	54	11	11	B
	J1A1I	2,295	53	8	7	B
14 mc.	KA2DS	14,364	124	19	23	C

<b>LAOS</b>						
14 mc.	XWBAB	65,065	319	29	48	-
<b>LEBANON</b>						
All Band	OD5LX	39,388	156	21	65	B
<b>MACAU</b>						
14 mc.	CR9AI	14,040	130	20	25	C
<b>SAUDI ARABIA</b>						
All Band	H21HZ	202,224	369	42	134	B

**EUROPE**

<b>AUSTRIA</b>						
All Band	OE5JK	292,825	639	60	161	C
	OE3VP	30,578	190	88	98	B
	OE6PH	19,536	184	19	55	-
	OE3SE	12,616	94	25	51	R
	OE8RP	11,060	89	21	58	A
	OE3SL	5,994	100	14	40	B
	OE3VW	3,822	57	12	30	B
14 mc.	OE2SF	30,107	241	22	55	-
	OE5SD	12,290	149	12	37	B
	OE5BV	11,826	144	17	37	C
	OE5BQ	11,275	141	15	40	C

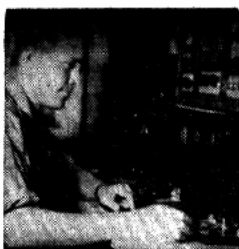
<b>AZORES</b>						
All Band	CT2BO	14,104	159	11	30	-
<b>BALEARIC IS.</b>						
All Band	E46AF	165,612	565	44	104	B
<b>BELGIUM</b>						
All Band	ON4HB	78,526	358	37	105	-
	ON4AU	71,808	260	47	89	C
	ON4CI	3,605	49	14	21	-
21 mc.	ON4AL	1,551	49	5	6	-
14 mc.	ON4FU	31,080	242	20	50	-
7 mc.	ON4C	1,368	54	5	19	-

<b>CZECHOSLOVAKIA</b>						
All Band	OK3MM	209,296	620	49	157	B
	OK3AL	86,180	439	36	119	C
	OK1AEH	22,989	166	22	74	B
	OK1KCI	20,967	210	23	64	-
21 mc.	OK1JX	37,191	217	21	48	C
<b>DENMARK</b>						
All Band	OZ7G	97,382	283	48	98	B
	OZ7BG	71,876	266	40	111	C
	OZ5PA	51,830	236	34	108	-
	OZ7N	34,265	285	26	63	B
	OZ5PO	3,915	57	11	18	C
	OZ2NU	3,700	96	6	31	B
21 mc.	OZ3FL	17,934	125	18	31	B
14 mc.	OZ70F	1,488	52	6	18	B
	OZ7AX	1,219	54	3	20	B
7 mc.	OZ6HS	714	45	3	14	B
3.5 mc.	OZ1AH	1,672	76	3	19	B
	OZ1SM	418	38	2	9	-

<b>EIRE</b>						
All Band	E19J	53,157	275	29	58	C
21 mc.	E15F	4,950	76	9	24	C

<b>ENGLAND</b>						
All Band	G4CP	177,891	404	60	137	C
	G8FXO	120,676	320	42	140	B
	G3EYN	81,842	255	36	115	-
	G2AJB	80,352	264	50	112	-
	G2HPF	56,125	253	35	90	C
	G6XL	38,430	142	42	63	B
	G3TUV	25,063	194	19	52	-
	G3FN	24,831	143	30	59	-
	G3HTW	7,440	101	12	36	B
	G3ESF	4,900	91	10	40	B
	G3KAY	3,952	64	12	40	B
	G3HSM	3,096	46	11	25	-
21 mc.	G3WP	352	16	4	4	-
21 mc.	G3DDG	33,810	205	20	45	C
	G5LIZ	18,864	151	17	31	C

14 mc.	G2LB	100,425	526	28	75	C
	G3GEN	13,822	148	13	36	B
	G3GSZ	1,701	21	12	16	-
<b>FINLAND</b>						
All Band	OH20J	35,875	180	40	85	B
	OH2PM	20,678	124	25	70	B
	OH7OU	20,530	148	21	60	B
	OH5NF	20,500	179	19	63	C
	OH5NY	15,879	158	16	68	B
	OH6OZ	13,776	103	23	61	B
	OH7DT	3,696	105	6	27	B
	OH2LU	2,255	54	9	32	B
	OH5OY	960	28	8	22	A
	OH9QL	272	15	5	11	A
28 mc.	OH5OU	108	12	2	7	-
21 mc.	OH5OT	5,863	118	10	31	B
	OH2XK	1,922	31	10	21	B
14 mc.	OH1PW	51,597	314	23	58	B
	OH2WV	14,816	167	14	42	B
	OH4BT	10,320	135	15	35	B
	OH2VZ	9,850	120	13	37	B
	OH1TI	5,031	67	10	33	-
	OH2VN	4,725	64	13	32	C
	OH2KB	4,030	100	7	24	B
	OH3SS	3,630	82	8	25	B
	OH1TA	1,647	57	5	22	A
	OH1VY	1,176	37	6	18	B
	OH6RZ/2	1,165	37	6	18	A
	OH3TI	1,007	53	3	16	A
	OH2IK	496	32	2	14	R
	OH3BP	156	10	8	10	B
	OH5PG	154	15	2	9	A
7 mc.	OH7NF	4,810	86	9	28	C
	OH5PB	1,272	51	3	21	A
<b>FRANCE</b>						
All Band	F3AT	90,948	267	50	106	-
	F8TM	64,728	260	33	91	B
	F8OP	57,728	331	32	96	R
	F8CS	45,342	228	26	73	B
	F8VK	31,784	228	20	38	B
	F8FE	23,184	169	22	25	-
	F8KY	8,272	134	10	37	-
	F8RM	4,648	59	18	38	R
28 mc.	F8NS	300	26	3	2	-
	F3II	90	6	2	3	A
7 mc.	F3AG	2,074	48	5	29	B
<b>GERMANY</b>						
All Band	DJ					



**SM5DW**—Rolf was the All-Band CW winner for Sweden. He ran 500w to a pair of 813s, AR-88 receiver with preselector and selectoject. Three Vee-beams and a couple of Ground Planes gave him coverage in all directions.

<b>ICELAND</b>					
<b>All Band</b>					
<b>TF3AB</b>	21,546	176	17	46	B
<b>TF3NA</b>	128	11	5	11	-

<b>ITALY</b>					
<b>All Band</b>					
<b>I1ALU</b>	96,170	328	46	117	-
<b>I1TFAI</b>	39,362	200	23	71	C
<b>I1BLF</b>	23,062	168	19	39	-
<b>I1ER</b>	6,394	61	18	28	B

<b>21 mc.</b>	2,203	50	8	24	-
<b>14 mc.</b>					
<b>I1EUQ</b>	13,883	169	14	42	-

**NETHERLANDS**

<b>All Band</b>					
<b>PA0UN</b>	429,489	646	78	194	B
<b>PA0SPR</b>	205,588	410	60	116	B
<b>PA0TUA</b>	187,533	426	60	141	-
<b>PA0AGA</b>	56,280	298	28	82	-
<b>PA0VB</b>	41,825	206	33	78	C
<b>PA0WAC</b>	13,800	120	21	39	-
<b>PA0HP</b>	6,985	109	12	43	-
<b>PA0NN</b>	4,488	54	17	27	-
<b>PA0SNG</b>	1,240	38	10	21	B

<b>21 mc.</b>	32,092	164	24	47	-
<b>PA0KX</b>	24,614	157	18	44	-
<b>PA0OT</b>	1,870	41	7	10	-

**14 mc.**

<b>PA0LA</b>	18,904	131	21	47	C
<b>PA0ZL</b>	17,083	157	21	46	C
<b>PA0HK</b>	12,972	137	14	32	-
<b>PA0UV</b>	10,488	112	17	40	-
<b>PA0RRS</b>	2,407	53	8	21	-
<b>PA0PLM</b>	576	32	4	14	-

**7 mc.**

<b>PA0NIC</b>	7,875	149	10	35	-
<b>PA0G1</b>	3,996	78	7	20	-

**3.5 mc.**

<b>PA0TA</b>	4,030	128	5	26	B
<b>PA0LV</b>	2,425	96	4	21	-
<b>PA0WKL</b>	1,320	67	2	18	B

**NORTHERN IRELAND**

<b>All Band</b>					
<b>G13IV</b>	70,782	301	36	105	C

**NORWAY**

<b>All Band</b>					
<b>LA6U</b>	28,227	181	29	68	A
<b>LA2Q</b>	4,410	90	10	35	-
<b>LA3MA</b>	4,365	89	10	35	-
<b>14 mc.</b>					
<b>LA5DB</b>	1,575	47	6	19	-

**POLAND**

<b>All Band</b>					
<b>SP5FM</b>	85,635	357	40	125	C
<b>SP5PK</b>	68,527	261	44	95	B
<b>SP5AR</b>	53,584	247	36	91	C
<b>SP5KA</b>	2,475	87	4	21	-
<b>SP5CK</b>	1,196	42	6	20	A

**21 mc.**

<b>SP6WH</b>	4,147	59	11	18	A
--------------	-------	----	----	----	---

**14 mc.**

<b>SP5KAB</b>	17,052	242	13	36	D
<b>SP5AK</b>	3,552	68	12	29	B

**7 mc.**

<b>SP3PD</b>	4,902	92	10	33	B
--------------	-------	----	----	----	---

**3.5 mc.**

<b>SP3KA0</b>	2,706	135	3	19	B
---------------	-------	-----	---	----	---

**PORTUGAL**

<b>14 mc.</b>					
<b>CT1CO</b>	45,710	309	22	48	-

**ROUMANIA**

<b>All Band</b>					
<b>YO3RF</b>	150,696	590	50	132	B
<b>YO3VA</b>	7,592	124	11	41	A

**SAARLAND**

<b>All Band</b>					
<b>9S4AX</b>	31,719	167	33	64	B

**SPAIN**

<b>All Band</b>					
<b>EA3AB</b>	113,616	400	38	95	C
<b>EA3CF</b>	103,078	276	26	47	C
<b>KA1CP</b>	41,376	243	27	69	-
<b>EAC3C</b>	38,200	204	33	67	-
<b>EAC2CK</b>	7,980	72	18	39	B
<b>EA5EF</b>	4,464	55	11	37	-
<b>EAC2CR</b>	3,422	93	8	21	-
<b>EALPQ</b>	498	21	5	12	-
<b>14 mc.</b>					
<b>EA4CR</b>	41,470	319	20	45	C

**SWEDEN**

<b>All Band</b>					
<b>SM5DW</b>	115,391	312	47	126	C
<b>SM5AQW</b>	113,694	453	41	107	C
<b>SM6D</b>	103,742	316	45	137	B
<b>SM6DD5</b>	28,689	198	35	77	A
<b>SM6DA</b>	25,017	206	18	75	B
<b>SM5CCE</b>	21,312	228	17	55	B
<b>SM3AF</b>	9,570	128	15	51	-
<b>SM5UG</b>	8,408	130	12	46	B
<b>SM4AQK</b>	7,797	67	24	45	-
<b>SM7A00</b>	6,900	69	18	42	B
<b>SM5LL</b>	6,890	42	27	33	-

<b>SM5BRO</b>	4,136	38	20	27	-
<b>SM5BFR</b>	1,300	30	8	17	-
<b>SM2VP</b>	1,092	34	6	7	C
<b>SM6PF</b>	42	4	3	4	-
<b>28 mc.</b>					
<b>SM5CO</b>	3,135	38	11	22	C
<b>SM7QY</b>	425	17	9	16	C
<b>27 mc.</b>					
<b>SM7EVO</b>	24,064	100	16	31	C
<b>SM5LV</b>	1,392	30	8	21	A
<b>SM6VY</b>	432	14	6	12	B
<b>SM5HH</b>	378	14	5	4	B
<b>14 mc.</b>					
<b>SM5IZ</b>	37,596	224	23	55	-
<b>SM4BEC</b>	33,245	226	21	40	-
<b>SM3ACP</b>	18,116	154	15	39	-
<b>SM2ALU</b>	10,788	136	12	29	-
<b>SM3AMR</b>	6,875	145	8	27	-
<b>SM7BY</b>	665	21	7	12	B
<b>SL3CN</b>	144	8	3	6	B

<b>7 mc.</b>					
<b>SM5APB</b>	2,822	73	7	27	C
<b>SM5CXF</b>	168	12	3	9	B
<b>SM5CVH</b>	24	6	2	4	A
<b>3.5 mc.</b>					
<b>SM6JY</b>	1,406	75	2	17	C
<b>SM5CZD</b>	84	12	2	5	A
<b>SM7CAB</b>	99	11	2	7	B

**SWITZERLAND**

<b>All Band</b>					
<b>HB9NL</b>	328,735	615	66	149	C
<b>HB9MO</b>	195,968	284	56	123	C
<b>HB9NW</b>	15,183	163	17	46	B
<b>14 mc.</b>					
<b>HB9QR</b>	67,890	303	29	64	B
<b>7 mc.</b>					
<b>HB9UB</b>	3,016	100	5	24	B
<b>3.5 mc.</b>					
<b>HB9KC</b>	1,924	73	4	22	B
<b>HB9DB</b>	72	7	3	6	B

**TRIESTE**

<b>All Band</b>					
<b>I1BNU/T</b>	24,070	184	23	60	B

**14 mc.**

<b>I1YCZ/T</b>	5,890	119	8	30	B
----------------	-------	-----	---	----	---

**WALES**

<b>All Band</b>					
<b>GW3HR</b>	93,167	336	43	108	B
<b>GW3HT</b>	21,534	160	18	56	-

**YUGOSLAVIA**

<b>7 mc.</b>					
<b>YU2HA</b>	11,457	192	12	45	-
<b>YU1AG</b>	6,888	142	9	33	B

**OCEANIA**

**AUSTRALIA**

<b>All Band</b>					
<b>VK2GW</b>	152,456	447	45	73	B
<b>VK2EO</b>	77,004	290	32	61	-
<b>VK2PY</b>	42,394	167	37	57	B
<b>VK2ADE</b>	17,780	91	25	45	B
<b>VK3CX</b>	7,224	64	18	24	-
<b>VK4CG</b>	4,466	53	14	15	-
<b>VK6RU</b>	66,992	237	40	66	-

**CAROLINES IS., WESTERN**

<b>21 mc.</b>					
<b>K6CGG</b>	59,730	326	24	42	C

**HAWAII**

<b>All Band</b>					
<b>KH6IJ</b>	395,784	961	64	74	D
<b>KH6MP</b>	186,990	522	59	64	C
<b>KH6SP</b>	110,522	537	30	34	-
<b>KH6MG</b>	18,305	177	18	17	B

**MARIANAS IS.**

<b>All Band</b>					
<b>K6GAGC</b>	21,508	115	38	38	B

**NEW CALEDONIA**

<b>All Band</b>					
<b>FK8AH</b>	22,889	184	22	25	-
<b>FK8AO</b>	8,640	81	22	18	B

**NEW ZEALAND**

<b>All Band</b>					
<b>ZL1BY</b>	194,680	434	62	93	B
<b>ZL1M1</b>	107,262	376	47	54	B
<b>ZL2GS</b>	82,610	263	46	81	B
<b>ZL1MT</b>	9,240	75	29	27	A
<b>14 mc.</b>					
<b>ZL4CK</b>	16,203	167	14	19	B
<b>7 mc.</b>					
<b>ZL3LL</b>	7,511	93	12	17	B

**PHILIPPINES**

<b>All Band</b>					
<b>DU7SY</b>	128,452	428	47	54	C

**SOUTH AMERICA**

**ARGENTINA**

<b>14 mc.</b>					
<b>L3HR</b>	61,848	300	25	47	-
<b>L3TAS</b>	39,816	236	22	36	C
<b>L3TABL</b>	7,476	66	10	23	C
<b>L3TZY</b>	5,909	113	9	10	-
<b>L3LZY</b>	3,540	86	6	9	-

**BRAZIL**

<b>All Band</b>					
<b>PY2NX</b>	77,913	272	40	59	-
<b>PY3RW</b>	51,027	241	30	43	-
<b>PY3OX</b>	50,630	200	39	46	-
<b>PY1ANR</b>	18,183	115	21	36	-
<b>21 mc.</b>					
<b>PY4AO</b>	14,392	90	18	38	-
<b>PY1AZO</b>	8,804	58	13	18	-
<b>14 mc.</b>					
<b>PY7AN</b>	98,687	405	28	53	-
<b>PY2KD</b>	35,320	207	21	35	B
<b>PY2AS</b>	29,451	137	19	32	B
<b>PY5VF</b>	15,228	118	19	28	-
<b>PY8MO</b>	10,800	158	10		



[from page 109]

28 mc.  
G2BVN 4,140 78 9 9 B  
(G2BVN-G3ERF)

**FINLAND**  
All Band  
OHIAA 111,534 408 40 125 C  
(Club Station)

**GERMANY**  
All Band  
DL4MW 262,908 530 58 143 C  
(DL4M-DL4XY)  
DL9CI 122,980 323 46 128 C  
(DL1CR-DL3AO-DJ2MB-DL9CI)  
DL1IL 23,955 165 22 81 C  
(DL1IL-DL6KC)

**HUNGARY**  
All Band  
HA5KBA 326,899 739 66 167 D  
(Club Station)  
HA5KBC 75,735 319 49 104 B  
(Club Station)

**ITALY**  
All Band  
I1SXZ 57,838 263 34 87 -  
(I1SXZ-I1CCO-I1-10-001)  
I1NT 45,773 264 24 67 -  
(I1NT-I1RB)

**NETHERLANDS**  
All Band  
PI1RR 47,619 281 32 85 -  
(PI1RRS-PA6INE)

**SWEDEN**  
All Band  
SM3AKW 56,100 185 45 105 C  
(SM3AKW-SM3AU)

7 mc.  
SM3AGD 5,075 138 5 30 B  
(SM3AGD-SM3AQD)

**SWITZERLAND**  
All Band  
HB9RW 126,768 371 45 107 B  
(HB9RW-HB9QU-HB9RZ)

**YUGOSLAVIA**  
7 mc.  
YU1AH 1,820 62 5 21 B  
(Club Station)

Altho no category was set up for Novice competition the following sent in logs, and their scores noted.

**NOVICE**  
21 mc.  
WN3BWU 782 17 6 11 B  
KN6JY 130 15 5 5 -

Our Thanks to the following stations who sent in logs for checking purposes only:

W1MAN	W3MOY	W3WNI
W4ZHP	W5DRK	W6DTJ
W6EJA	W6HFB	W6NAZ
W8KYJ	W8XND	W8XNI
W8PQQ	W8TTO	G2DHV
G3EMM	G3ESP	G3HLY
G3KAA	G8PW	GM3IXT
GW2DHM	KA2FC	KA2WV
LA2E	LATX	OH2OM
OK1NB	OK1ZW	OQ6PH
OZ4IM	OZ7KP	OZ8HS
PA0DOK	SM3BIZ	SM5AGV
SM6JY	SM7BVO	YK2ZH
VQ4BY	V82CB	Z66JT
		Z86IX.

That is all fellows — see you all next year. FA

**Club Scores**

**Southern California DX Club 1,592,099**

Ohio Valley Amateur Radio Association. 1,028,379

Potomac Valley Radio Club. 833,713

Northwest Amateur Radio Club. 365,257

Maui Amateur Radio Club. 288,614

Goose Bay Amateur Radio Club. (Canada) 156,695

Japan DX Radio Club. (Japan) 152,591

Lancaster Radio Transmitting Society 145,323

Warsaw Short Wave Club. (Poland) 135,519

Redding Radio Club. 127,038

Navy Mike and Key Club. (Japan) 122,573

Niles Amateur Radio Club. 92,474

Northern California DX Club. 64,870

M. I. T. Radio Society. 64,000

Four Lakes Amateur Radio Club. 59,550

Rochester Amateur Radio DX Association. 29,262

Institute of Technology of Finland. (Finland) 13,838

Milwaukee Radio Amateur Club. 12,803

Loyola University Radio Club. 5,796

Coronado Radio Club. 3,036

South Shore Amateur Radio Club. (Canada) 1,254

South Hills Brass Pounders. (Novice) 782

**LETTERS [from page 18]**

step-by-step I mean articles covering the entire mobile installation such as power supply, converter, transmitter and installation in the automobile.

I sincerely think that a series of six-meter mobile articles would create an intense amount of interest in your magazine. I have subscribed to the magazine since June, 1954, and would like to say that I think you should be commended for the terrific change in the last few issues.

William J. Miller, K9BAB

# OPPORTUNITIES

## IN RESEARCH AND DEVELOPMENT OF NUCLEAR WEAPONS

if you have a trade school education or the equivalent in any of the following fields—

- **ELECTRONIC FABRICATION:** for custom building of experimental circuitry from verbal instructions, schematics, sketches and specifications.
- **ELECTRONIC EQUIPMENT REPAIR:** to maintain commercial electronic equipment, including oscilloscopes, data recorders, signal generators, etc.
- **TRANSFORMER:** to build a wide variety of experimental transformers, working from samples and specifications.

- **FABRICATION PLANNER:** to lay out and break down electronic equipment for wiring by small pilot assembly group.

Send resume to

**GENERAL EMPLOYMENT SECTION 566**

**SANDIA CORPORATION**



ALBUQUERQUE, NEW MEXICO

## LMB BOX CHASIS OFFERS FREE inside LMB BOXES

10 tested kit diagram projects for the builder. Each one of these kit diagrams built by a recognized expert. Kit projects are complete in every detail. Circuit diagram, photo of project both front and rear photo. Rear photo shows wiring and parts. Detailed instructions for building, complete parts list and approximate cost. Complete to build except parts and your distributor can supply the parts. Ask your distributor for the list of LMB kit Diagram Projects. If he does not have them, write to

**LMB**

1011 Venice Blvd.  
Los Angeles 15, Calif.