

# Phone Section Results— CQ's 1950 DX CONTEST

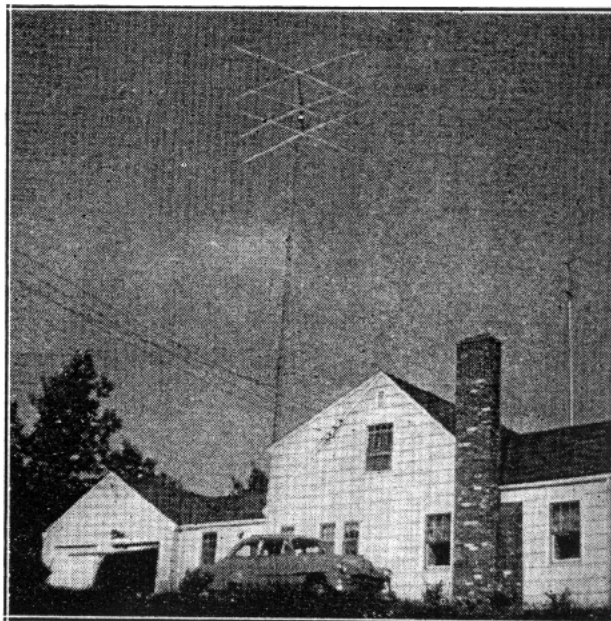
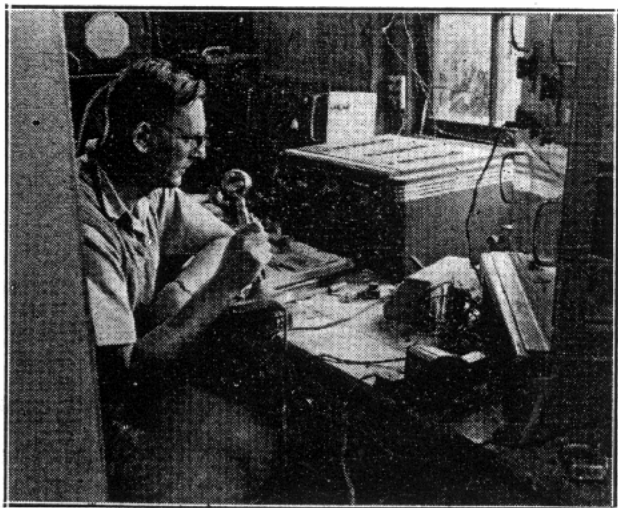
HERB BECKER, W6QD

**T**HIS MONTH we are running the final results of the Phone Section of the 1950 World Wide DX Contest. Last month's issue contained the c.w. Scores.

Conditions, unfortunately, were very poor during the weekend of the phone section, so much so, in fact, that some of the boys were surprised to have worked anything. Nevertheless, the phone DX men around the world seemed to enjoy the Contest and I am glad they don't hold "CQ" responsible for the conditions that prevailed!

We have had a number of boys wonder why we couldn't pick different weekends. This is as good a place as any to tell you that if you were to sit down and compile a calendar of activities—looking at it from a world-wide basis—for a period of a year, you would see very few weekends absolutely open. We are certainly open for suggestions, but before you propose different dates, be sure that you have no other world-wide activities overlapping, or for that matter, too close to the proposed dates. Our Committee has spent a great

VQ4RF, assisted by VQ4AA scored 133,812 points. Two transmitters were used. On 28 mc. Frank used a pair of grid modulated 813's with 150 watts input, while on 14 mc. a single 813 was used as a power amplifier with another one for super-modulation. Input here was also 150 watts. The receiver is an SX-28 with a pre-selector. They used two 8-wave (28 mc.) V beams—one covering DL and ZL, and the other direction covering VP on the West and VU on the East. VQ4AA helped erect this antenna. An 8-wave (28 mc.) Rhombic is directed on W. All three antennas were also used on 14 mc.



WIATE made an all band score of 88,320. We couldn't get a picture of his station, but we think his 110-foot tower is quite imposing. On 20 he uses a biconical 6-element rotary with wide spacing, while on 10 he uses a 5-element wide-spaced rotary 35 feet high. The beam actually sits 14 feet over the top of the tower and is driven by a prop pitch motor. Chad uses a 75A1 receiver.

deal of time trying to pin down dates that would not step on any one else's toes.

Now then, here are a few of the highest scores from the phone section. It appears that CN8ET, assisted by CN8EG, CN8EH, CN8EJ, CN8EO, and CN8EM, scored 186,000 points, making him world high. Next was another multiple operator station, VQ4RF, assisted by VQ4AA, with 133,000 points! Of course, all of these figures are in round numbers. The highest single operator station was HC2JR with 120,000, closely followed by CE2CC with 114,000. We can't overlook KH6IJ, who did so well in the c.w. contest, and now he comes up with 100,000. CT1BW, who many of you will remember as CR5UP, scored 90,000. By the way, these are *All-Band* scores.

The highest station in USA was WIATE, with 88,000 points, although on 28 mc W1ONK out-pointed him, 9300 to 6800. W3LOE had a good All-Band score of 50,000, but on 14 mc W3NJE scored 32,000 to LOE's 15,000. This gives an idea how a man can win a first place All-Band award, but this doesn't necessarily mean that he will win

first pla  
serving  
thing ta  
A few  
89,000;  
48,000;  
with 74,  
Count  
participa  
Section  
cordance  
ing certi

**M**  
**UNITED**

All bands

**CANADA**  
All bands

**ECUADOR**  
All bands

**ENGLAND**  
All bands

**FRENCH**  
All bands

**GUATEMALA**  
All bands

**IRELAND**  
All bands

W3NJE ca  
29,200 poi  
4-250A's.  
with single  
motors on  
from 10 to  
as modulati  
and 20, wh  
and 8-eleme  
feet. The re  
Q-5'er. In  
Waseca,



AUGUST

ST

20. We  
we think  
he uses  
ig, while  
35 feet  
top of  
r. Chad  
  
would  
  
scores  
N8ET,  
N8EO,  
g him  
operator  
33,000  
are in  
r sta-  
lowed  
H6IJ,  
ow he  
ny of  
0. By  
  
with  
out-  
good  
NJE  
idea  
vard,  
win

first place on each of the single bands. By observing the complete scores you will find this very thing taking place many times.

A few other high ones include LU8CW with 89,000; EA2CQ, who, as you know, is a YL, 48,000; DL3DO, 66,000; and there is 4X4RE again with 74,000. TI2HP did a good job scoring 77,000.

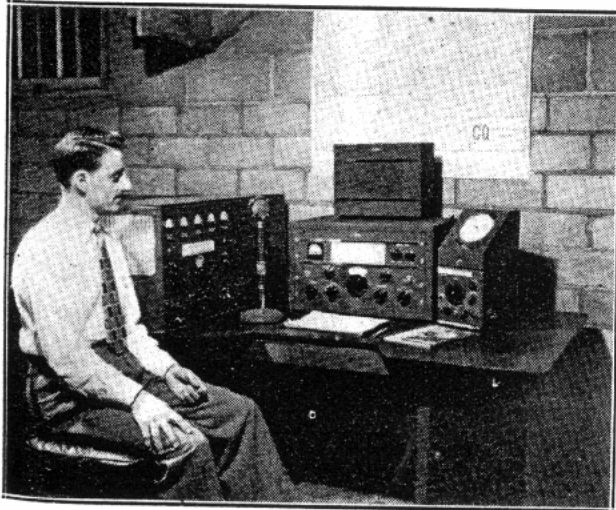
Countries in which there has been only one participant will show the score under the All-Band Section only. Certificates will be awarded in accordance with the rules, and those stations receiving certificates are shown in bold face type.

**PHONE SCORES**

**Multiple Operator Stations**

UNITED STATES				
All bands	STATION	COUNTRIES	ZONES	SCORE
	<b>W3KWH</b> (W3LOR)	39	27	7,458
	<b>W6AM</b> (W6KPC)	56	31	40,629
CANADA				
All bands	<b>VE3JU</b> (VE3BHS)	49	28	12,166
ECUADOR				
All bands	<b>HC2GRC</b> (3 operators)	35	20	20,130
ENGLAND				
All bands	<b>G2AHC</b> (G3AFM)	37	16	9,911
FRENCH MOROCCO				
All bands	<b>CN8ET</b> (CN8EG, CN8EH, CN8EJ, CN8EO, and CN8EM)	95	40	186,840
GUATEMALA				
All bands	<b>TG9AD</b> (XYL Ass't. Operator)	48	40	34,232
IRELAND				
All bands	<b>E18P</b> (2 operators)	42	16	8,062

W3NJE came up with 1st place on 14 mc. with 29,200 points. Al runs about a KW into a pair of 4-250A's. Tuning the transmitter is fully automatic with single dial control, using discriminators with motors on the tank condensers. This rig will cover from 10 to 80 meters, phone or c.w. 810's are used as modulators. The antenna is a dual-band for 10 and 20, which uses 4-elements closely spaced on 20, and 8-elements wide spaced on 10. The height is 73 feet. The receiver is a 75A1, with the crystal-controlled Q-5'er. Incidentally, W3NJE has now moved to Waseca, Minnesota and will become a WØ.



**ITALY**

All bands	STATION	COUNTRIES	ZONES	SCORE
	<b>I1BDV</b> (I1ARP)	88	41	62,307

**KENYA**

All bands	STATION	COUNTRIES	ZONES	SCORE
	<b>VQ4RF</b> (VQ4AA)	87	39	133,812

**North America-Single Operator Stations**

**UNITED STATES**

All bands	STATION	COUNTRIES	ZONES	SCORE
	<b>W1ATE</b>	89	39	88,320
	<b>W1PDF</b>	72	36	41,796
	<b>W1CJK</b>	78	39	40,131
14 mc.	STATION	COUNTRIES	ZONES	SCORE
	<b>W1ATE</b>	56	20	42,484
	<b>W1AFZ</b>	48	20	26,180
	<b>W1PDF</b>	44	20	18,112
	<b>W1CJK</b>	46	19	14,885



W6AM, assisted by W6KPC, scored 40,629 points. Don used two finals—each running around 800 watts input. The usual 10 Rhombics were available as well as a V beam and two curtains. Receiving equipment involves RME receivers and pre-selectors.

28 mc.	STATION	COUNTRIES	ZONES	SCORE
	<b>W1ONK</b>	44	20	9,394
	<b>W1ATE</b>	33	19	6,812
	<b>W1CJK</b>	32	20	5,928
	<b>W1PDF</b>	28	16	4,576
	<b>W1NLN</b>	5	5	210
All bands	STATION	COUNTRIES	ZONES	SCORE
	<b>W2RGV</b>	58	33	19,747
	<b>W2FE</b>	12	10	770
14 mc.	STATION	COUNTRIES	ZONES	SCORE
	<b>W2RGV</b>	40	17	9,177
	<b>W2FE</b>	5	5	110
	<b>W2TXB</b>	3	2	45
28 mc.	STATION	COUNTRIES	ZONES	SCORE
	<b>W2ZVS</b>	40	21	11,895
	<b>W2RGV</b>	18	16	1,904
	<b>W2FE</b>	7	5	288
All bands	STATION	COUNTRIES	ZONES	SCORE
	<b>W3LOE</b>	77	37	50,502
	<b>W3NJE</b>	63	31	41,078
	<b>W3DHM</b>	44	27	7,313
	<b>W3PDX</b>	22	14	2,160
14 mc.	STATION	COUNTRIES	ZONES	SCORE
	<b>W3NJE</b>	53	20	29,200
	<b>W3LOE</b>	43	19	15,438
	<b>W3EVW</b>	33	15	6,480
	<b>W3DHM</b>	39	22	6,283
	<b>W3PDX</b>	19	11	1,590
28 mc.	STATION	COUNTRIES	ZONES	SCORE
	<b>W3LOE</b>	34	18	10,088
	<b>W3NJE</b>	10	11	777
	<b>W3DHM</b>	5	5	110
	<b>W3PDX</b>	3	3	42
All bands	STATION	COUNTRIES	ZONES	SCORE
	<b>W4OM</b>	45	21	14,916
	<b>W4CYC</b>	46	26	11,044
	<b>W4CKB</b>	28	17	4,410
	<b>W4KMS</b>	14	6	900

	STATION	COUNTRIES	ZONES	SCORE
14 mc.	W4OM	42	19	9,699
	W4CYC	27	13	4,080
	W4CKB	26	17	3,956
	W4KMS	11	4	459
	W4CVO	8	7	255
28 mc.	W4VB	26	15	4,100
	W4OM	20	14	2,238
	W4CYC	19	13	1,600
	W4KMS	4	4	96
	W4EEO	3	3	51
	W4CKB	4	4	48
28 mc.	W5LQW	15	11	1,586
All bands	W6EZX	54	33	28,884
	W6KQY	46	29	19,650
	W6EPZ	46	31	14,245
	W6BJU	35	25	12,660
	W6QEU	27	19	5,704
	W6CHV	20	19	3,744
	W6VVZ	14	13	2,403
14 mc.	W6EZX	35	18	12,720
	W6KQY	34	19	11,395
	W6BUJ	23	16	4,914
	W6EPZ	23	15	3,876
	W6QEU	21	12	3,597
	W6IBD	13	8	1,218
28 mc.	W6EPZ	23	16	3,237
	W6EZX	19	15	3,128
	W6GQH	19	13	2,784
	W6BJU	12	9	1,785
	W6KQY	12	10	1,034
	W6QEU	6	7	195



W9EWC made 29,391 points. Butch runs 900 watts input to a pair of 4-125A's modulated by a couple of 304TL's. The exciter is a 310BI, and he also has a 32V2 available. The receiver is a 75A1. For antennas Butch has a 5-element rotary for 10, and a 4-element wide spaced for 20, plus four reversible rhombics.



W6EZX made an all band score of 28,884. Don uses separate finals on 10 and 20 with push-pull 304TL's. Modulators are VT227A's. The receiver is a 75A1, while the antennas consist of two elements for 14 mc. and three elements for 28 mc. Note the antennas super-imposed in the background. Both are Delta fed.

All Bands	W7HRH	15	13	2,268
14 mc.	W7MLJ	16	15	2,790
	W7CX	17	10	1,620
	W7KSA	12	12	1,080
	W7HRH	7	6	611
	W7NDQ	6	5	187
	W7JUO	6	4	140
28 mc.	W7HRH	8	7	510
	W7AHX	9	9	288
All bands	W8NXF	61	37	17,346
	W8ICC	10	14	864
14 mc.	W8LIO	42	20	20,336
	W8NXF	33	18	4,182
	W8ICC	1	1	2
28 mc.	W8NXF	28	19	4,465
	W8ICC	9	13	770
	W8PM	5	5	90
All bands	W9EWC	66	35	29,391
	W9RBI	52	31	16,102
14 mc.	W9EWC	39	20	10,738
	W9RBI	17	32	5,831

	STATION	COUNTRIES	ZONES	SCORE
28 mc.	W9EWC	27	15	4,578
	W9RBI	14	20	2,550
	W9EXY	21	12	2,112
All bands	W0GUV	43	28	10,082
	W0TKX	8	8	288
14 mc.	W0ANF	30	18	5,760
	W0GUV	27	15	4,536
	W0MCX	25	16	3,403
28 mc.	W0GUV	16	13	986
	W0TKX	7	7	210
	W0NBS	6	6	96
	W0BRA	4	4	80

#### CANADA

All bands	VE2NI	29	14	2,236
	VE2IZ	20	12	1,536
14 mc.	VE2GQ	42	18	11,940
	VE2NI	17	6	690
	VE2IZ	15	7	638
28 mc.	VE2NI	12	8	440
	VE2IZ	9	8	323
All bands	VE3KF	34	21	5,885
All bands	VE7VO	45	31	19,000
	VE7OJ	25	19	4,092
14 mc.	VE7VO	31	20	8,670
	VE7OJ	21	15	2,952
28 mc.	VE7VO	14	11	2,000
	VE7MS	14	12	1,456
	VE7OJ	4	4	88

#### ALASKA

14 mc.	KL7UM	14	11	2,300
--------	-------	----	----	-------

#### BARBADOS

All bands	VP6SD	72	37	78,480
14 mc.	VP6SD	48	23	40,470
	VP6FO	21	12	5,082
28 mc.	VP6SD	24	14	5,700

#### BERMUDA

14 mc.	VP9G	42	20	19,158
--------	------	----	----	--------

#### COSTA RICA

All bands	TI2HP	85	42	76,962
	TI2TG	40	25	8,060
14 mc.	TI2HP	53	21	27,306
	TI2OE	34	18	10,868
	TI2TG	18	9	1,080

TI2HP  
He runs  
by TZ-4  
old HR  
wide sp

28 mc.

GUANT

All bands

28 mc.

HONDUR

14 mc.

MEXICO

28 mc.

NICARA

All bands

PANAMA

All bands

SWAN I

All bands

VIRGIN I

28 mc.

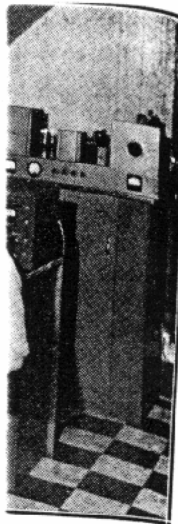
VP6SD sco

up with a

and 14 mc

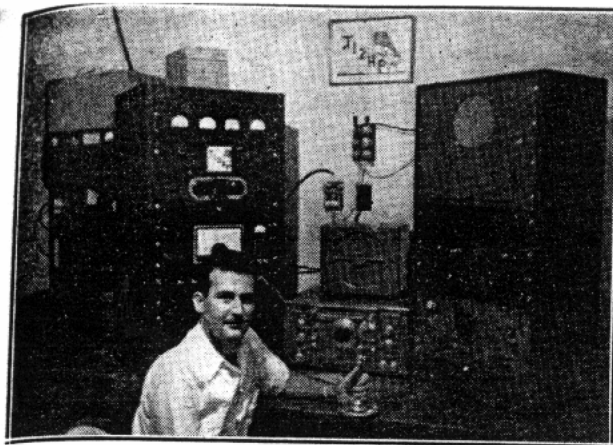
mc. folded

Receiv



runs 900 watts  
d by a couple  
d he also has  
5A1. For ant-  
10, and a 4-  
our reversible

ES	SCORE
	4,578
	2,550
	2,112
	10,082
	288
	5,760
	4,536
	3,403
	986
	210
	96
	80
	2,236
	1,536
	11,940
	690
	638
	440
	323
	5,885
	19,000
	4,092
	8,670
	2,952
	2,000
	1,456
	88
	2,300
	78,480
	40,470
	5,082
	5,700
	19,158
	76,962
	8,060
	27,306
	10,868
	1,080



T12HP came up with an all band score of 76,962. He runs 500 watts into a pair of HK-54's, modulated by TZ-40's. Receivers consist of an HRO-50 and an old HRO, plus a Q-5'er. A 10 and 20 meter 3-element wide spaced rotary is used, and a 1/4 wave Marconi does the job on 40.

28 mc.	STATION	COUNTRIES	ZONES	SCORE
	T12HP	32	21	12,561
	T12TG	32	16	3,192
	T12TY	16	13	1,479

### GUANTANAMO BAY

All bands	KG4AD	13	9	1,562
-----------	-------	----	---	-------

28 mc.	KG4AK	5	4	189
--------	-------	---	---	-----

### HONDURAS

14 mc.	HR2JM	18	7	575
--------	-------	----	---	-----

### MEXICO

28 mc.	XE1PO	37	19	21,952
--------	-------	----	----	--------

	XE1PY	26	16	9,198
--	-------	----	----	-------

### NICARAGUA

All bands	YN4CB	36	27	18,135
-----------	-------	----	----	--------

### PANAMA

All bands	HP1LB	19	19	1,482
-----------	-------	----	----	-------

### SWAN ISLAND

All bands	KS4AI	27	19	15,318
-----------	-------	----	----	--------

### VIRGIN ISLAND

28 mc.	KV4AQ	24	15	6,279
--------	-------	----	----	-------

VP6SD scored 78,480 points. The rig Syd uses winds up with an 813, input 500 watts. Antennas: 28 mc. and 14 mc. are 3 element beams. On 7 mc. and 3.5 mc. folded dipoles are used. Beams are 75 feet high. Receivers are HQ-120X and Eddystone 680.



## WINDWARD ISLANDS

28 mc.	STATION	COUNTRIES	ZONES	SCORE
	VP2GG	46	17	29,252

## South America—Single Operator Stations

### ARGENTINA

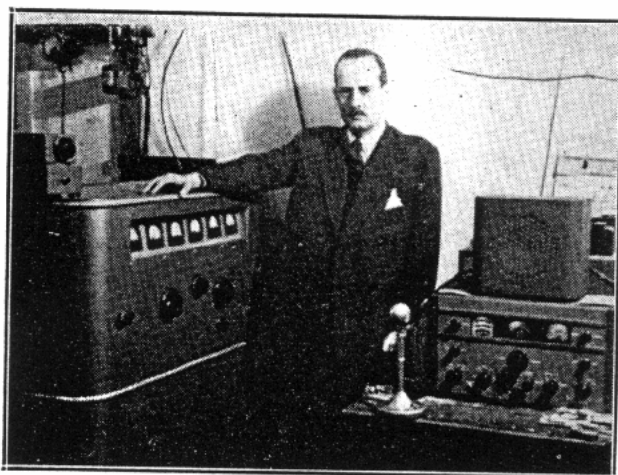
All bands	LU8CW	80	41	90,145
14 mc.	LU8CW	44	23	20,904
28 mc.	LU8CW	36	18	23,382
	LU8BF	26	16	6,804

### BRAZIL

All bands	PY2CK	57	38	28,310
7 mc.	PY2CK	3	3	30
14 mc.	PY4RJ	36	19	17,655
	PY2CK	30	19	5,831
28 mc.	PY2AHS	25	18	8,127
	PY2CK	24	16	6,960
	PY2AUC	26	15	6,232
	PY3IC	23	14	3,589
	PY1AQT	15	13	1,764

### CHILE

All bands	CE2CC	86	44	114,530
28 mc.	CE1AH	41	24	26,585
	CE2CC	35	19	25,288



CE2CC scored 114,530 points. His rig winds up with a pair of 304TL's modulated by 810's. He has two 3-element rotary beams used on 10 and 20 meters.

### COLOMBIA

14 mc.	HK5AY	4	5	171
--------	-------	---	---	-----

### ECUADOR

All bands	HC2JR	69	37	120,204
	HC2LF	22	20	11,802
7 mc.	HC2JR	2	2	4
14 mc.	HC2JR	35	19	26,460
	HC2LF	14	12	5,382
28 mc.	HC2JR	32	16	30,864
	HC2LF	8	8	1,184

### FALKLAND ISLANDS

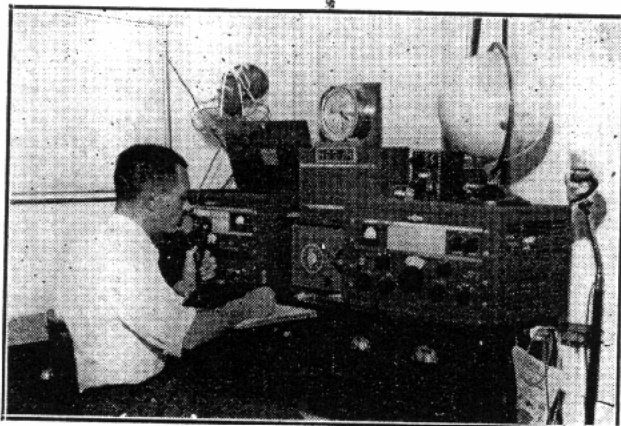
All bands	VP8AI	9	8	765
-----------	-------	---	---	-----

### PERU

All bands	OA4DW	54	36	35,010
	OA4AO	40	26	12,474
14 mc.	OA4DW	32	21	13,568
	OA4AO	20	12	2,538
28 mc.	OA4DW	21	14	4,655
	OA4AO	19	13	3,520

### URUGUAY

All bands	CX3BH	65	42	53,607
	CX1CG	33	28	38,430
	CX1BT	30	25	8,415



HC2JR's all band score is 120,204. Due to John being laid up in bed during the contest, his friend HC1JP, Jorge Philippe, shown in the photograph, did all of the operating. The receiver is a 75A1 and the transmitter is a 32V2. Antennas consist of 10 and 20 meter 3-element rotary beams.

	STATION	COUNTRIES	ZONES	SCORE
7 mc.	CX3BH	5	3	32
	CX1BT	5	3	32
14 mc.	CX3BH	30	20	12,400
	CX1CG	15	14	8,004
	CX1BT	10	9	1,425
28 mc.	CX3BH	30	19	12,201
	CX1CG	18	14	11,328
	CX2CN	20	16	4,752
	CX3BT	22	16	3,496
	CX3AA	22	14	2,988
	CX3AK	18	13	2,325
	CX1BT	15	13	2,072
	CX6BD	13	9	770

#### VENEZUELA

All bands	YV5BZ	37	20	26,505
	YV5AE	22	21	4,945
14 mc.	YV5BZ	35	19	24,948
	YV5AE	7	6	741
28 mc.	YV5AE	15	15	1,740
	YV5BZ	2	1	9

### Europe-Single Operator Stations

#### AUSTRIA

All bands	OE5CA	56	30	19,463
	OE5YL	48	24	15,194
	OE7FR	20	9	2,146
14 mc.	OE5YL	39	14	10,117
	OE5CA	33	12	6,120
	OE6FD	17	5	1,540
	OE3GA	16	4	1,060
	OE7FR	14	5	874
28 mc.	OE5CA	23	18	3,690
	OE7FR	11	10	588
	OE5YL	9	9	450

#### BALEARIC ISLANDS

All bands	EAGAF	45	19	13,632
-----------	-------	----	----	--------

#### CZECHOSLOVAKIA

All bands	OK2SO	57	23	15,040
14 mc.	OK1HI	44	16	17,760
	OK1RW	18	5	1,426
	OK1AW	8	5	286

#### DENMARK

All bands	OZ7BG	39	17	5,264
7 mc.	OZ7BG	2	2	8
14 mc.	OZ7EG	28	9	2,812
	OZ7TL	18	4	1,694
	OZ7HA	10	2	204
	OZ4Z	7	3	140

#### ENGLAND

All bands	G2DYV	28	14	2,730
7 mc.	G2DYV	2	2	8

14 mc.	G3DO	34	13	4,444
	G2DYV	19	6	1,125
28 mc.	G8KP	18	11	1,595
	G8SA	7	6	429
	G2DYV	7	6	234

#### FINLAND

14 mc.	OH3OX	10	3	247
28 mc.	OH2UV	2	2	8

#### FRANCE

All bands	F8XT	37	28	10,010
	F9HF	26	24	4,350
	F9GO	30	12	3,822
14 mc.	F9GO	26	9	3,010
	F9HF	6	4	100
	F8TM	3	2	30
	F9HF	20	20	3,080
28 mc.	F8XP	21	11	1,824
	F9GO	4	3	35

#### GERMANY

All bands	DL3DO	95	43	66,792
	DL1FK	86	44	36,190
	DL1FI	67	32	26,136
	DL3JH	55	24	14,062
	DL1EZ	24	10	1,768
7 mc.	DL3DO	20	7	1,080
	DL3JH	16	4	480
	DL1FK	11	4	225
	DL1FI	10	5	180
14 mc.	DL3DO	43	19	20,770
	DL1FI	42	17	11,741
	DL1FK	40	19	8,673
	DL3JH	24	10	3,060
	DL1FK	35	21	6,496
28 mc.	DL3DO	32	17	5,341
	DL7BA	20	14	1,938
	DL3JH	15	10	1,600
	DL1FI	10	15	1,325

#### GREECE

All bands	SV0WX	21	9	2,940
-----------	-------	----	---	-------

#### ITALY

All bands	I1RB	109	41	62,850
	I1YW	71	36	33,919
	I1AMU	49	17	18,216
7 mc.	I1YW	7	4	143
14 mc.	I1RB	55	19	19,610
	I1YW	42	19	14,213
	I1AMU	39	12	11,475

DL3DO scored 66,792 points. He runs around 100 watts input to a German pentode, LS-50. The receiver is a German Army job. Albert uses a Lazy H for USA and a 2-section 8JK for South America.



28 mc.

LUXEMBOURG

All bands

NETHERLANDS

14 mc.

PORTUGAL

All bands

7 mc.

14 mc.

28 mc.

28 mc.

CTIBW s

You should

running a

capable of

an 11 tub

job with

work on 7

ROMANIA

All bands

7 mc.

14 mc.

28 mc.

SPAIN

All bands

SWEDEN

All bands

6 7,444  
 1 1,125  
 6 1,595  
 6 429  
 234

3 247  
 2 8

10,010  
 4,350  
 3,822  
 3,010  
 100  
 30  
 3,080  
 1,824  
 35

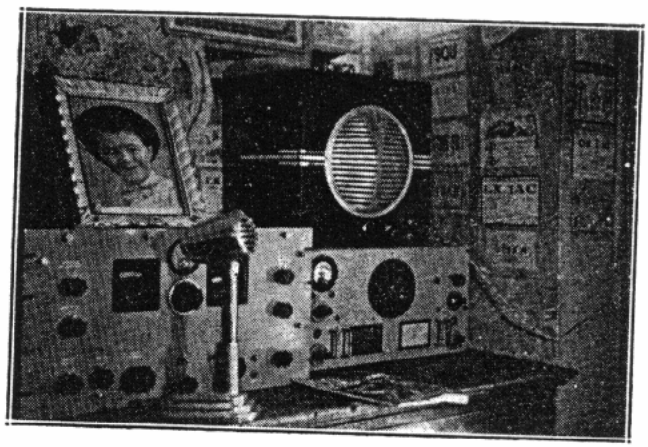
66,792  
 36,190  
 26,136  
 14,062  
 1,768  
 1,080  
 480  
 225  
 180

20,770  
 11,741  
 8,673  
 3,060  
 6,496  
 5,341  
 1,938  
 1,600  
 1,325

2,940

62,850  
 33,919  
 18,216  
 143  
 19,610  
 14,213  
 11,475

STATION	COUNTRIES	ZONES	SCORE
28 mc. IIRB	54	22	11,804
IIPSM	32	19	5,814
IYW	22	13	2,485
IIAMU	10	5	765
<b>LUXEMBOURG</b>			
All bands LX1JW	14	10	936
<b>NETHERLANDS</b>			
14 mc. PAØHM	20	9	2,349
PAØVB	7	3	1,060
PAØQF	12	5	578
<b>PORTUGAL</b>			
All bands CT1BW	118	44	89,262
CT1QG	82	38	60,600
CT1NT	58	17	18,900
CT1SQ	46	25	11,928
CT1MB	34	15	3,479
7 mc. CT1BW	27	8	2,555
CT1NT	10	4	210
CT1SQ	6	4	90
CT1MB	4	3	35
14 mc. CT1BW	56	22	23,322
CT1QG	39	19	12,586
CT1NT	21	6	1,944
CT1SQ	16	10	1,455
CT1MB	16	5	546
28 mc. CT1QG	43	19	17,856
CT1BW	35	14	8,771
CT1NT	27	7	5,610
CT1SQ	24	11	3,605
CT1MB	14	7	840



IIRB wound up with an all band score of 62,850. His rig winds up with 813 and 100 watts input. Receivers consist of an HRO and Super-Pro with a pre-selector. In the antenna department, 10 and 20 meter dipoles are used.

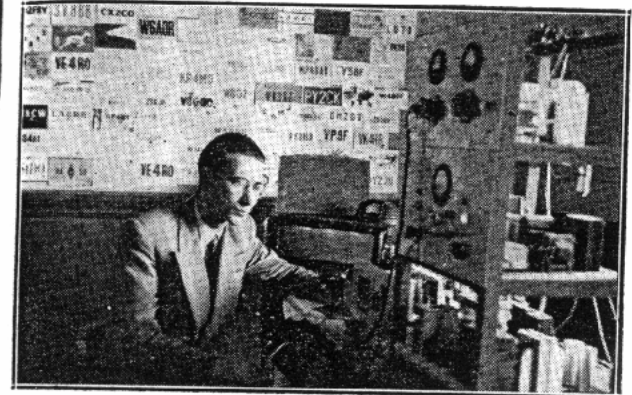
14 mc. SM4RD	12	3	480
SM4PG	7	5	156
SM5APA	5	2	36
28 mc. SM5APA	5	4	136
<b>SWITZERLAND</b>			
All bands HB9BJ	76	36	40,434
<b>TRIESTE</b>			
All bands I1YAK	49	21	16,310
14 mc. I1YAK	39	14	11,024
I1RC	18	11	1,537
28 mc. I1YAK	10	7	425
<b>WALES</b>			
All bands GW8BW	61	23	14,700
<b>YUGOSLAVIA</b>			
14 mc. YU1CAG	23	7	4,110

**Africa-Single Operator Stations**

<b>ALGERIA</b>			
All bands FA3JY	32	15	8,883
<b>BELGIAN CONGO</b>			
All bands OQ5DZ	51	28	31,916
14 mc. OQ5DZ	29	13	11,424
28 mc. OQ5BR	27	17	9,372
OQ5DZ	22	15	4,884

(Continued on page 56)

EA2CQ has an all band score of 47,880. Paula's OM is EA2CA. The rig used has 807's in the final. The antenna setup consists of 3-element rotary beams—one for 10 and one for 20. Up to the present time Paula has worked 135 countries and is hoping to soon pass her husband.



CT1BW scored 89,262 points for an All-Band total. You should remember Leonel as CR5UP. His rig was running about 50 watts input at that time but is now capable of 150 watts or so. Two receivers were used, an 11 tube Eddystone 5750, and a 13 tube home built job with dual conversion. Antenna is for multi-band work on 7, 14 and 28 mc, and is fed with a 600 ohm line.

<b>ROUMANIA</b>			
All bands YO3RF	51	18	10,419
YO3GL	27	10	4,477
YO3GH	26	11	3,848
YO3AG	25	10	1,960
7 mc. YO3RF	12	4	320
YO3GH	4	3	35
YO3AG	3	2	20
YO3GL	3	2	20
14 mc. YO3RF	23	9	3,104
YO3GH	22	8	2,970
YO3GL	18	6	2,520
YO3AG	11	3	322
28 mc. YO3RF	16	5	714
YO3AG	11	5	464
YO3GL	6	2	96
<b>SPAIN</b>			
All bands EA2CQ	82	38	47,880
EA3FK	8	7	330
<b>SWEDEN</b>			
All bands SM5LL	46	19	10,205
SM5APA	10	6	288

# VHF Antennas for Civil Defense

## For 100 to 250 Megacycles

With amateur mobile in CD limited to 28 mc. upwards, local emergency coordinators now plan extensive use of the 6, 2 and 1½ meter bands.

Mobile operations at these frequencies are working out surprisingly well, too, with excellent coverage using relatively low mobile power. Recognizing the need for inexpensive VHF antennas, Premax offers two new car-top designs. One requires only a single ½" hole for mounting and the other utilizes a suction cup mounting, requiring no holes, yet being always available for service.

A new low-cost ground plane (can be isoplane) antenna is also available for fixed station use.

High-tempered spring-wire whips are used thru-out and are mounted on ceramic feed-thrus in the ground-plane and permanent car-top models.

Write for bulletin or see your jobber

### PREMAX PRODUCTS DIVISION CHISHOLM-RYDER CO., INC.

5104 HIGHLAND AVENUE • NIAGARA FALLS, N.Y.

## EASY TO LEARN CODE

It is easy and pleasant to learn or increase speed the modern way—with an Instructograph Code Teacher. Excellent for the beginner or advanced student. A quick, practical and dependable method. Available tapes from beginner's alphabet to typical messages on all subjects. Speed range 5 to 40 WPM. Always ready, no QRM, beats having someone send to you.



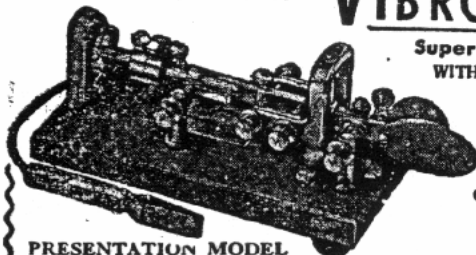
### ENDORSED BY THOUSANDS!

The Instructograph Code Teacher literally takes the place of an operator-instructor and enables anyone to learn and master code without further assistance. Thousands of successful operators have "acquired the code" with the Instructograph System. Write today for full particulars and convenient rental plans.

## INSTRUCTOGRAPH COMPANY

Dept. C, 4701 SHERIDAN ROAD, CHICAGO 40, ILL.

## AMAZING NEW VIBROPLEX



**Super Deluxe**  
WITH ADJUSTABLE  
MAIN SPRING  
AND OTHER  
GREAT  
FEATURES  
24-K  
GOLD-PLATED  
BASE TOP

PRESENTATION MODEL \$29.95

Vibroplex presents the first really speed control key. An adjustable main spring permits operator to send slower or faster as desired. No more muddy signals... no sacrifice of signal quality. Suits any hand or any style of sending. Free of arm tension. Sends easily as pressing a button. Praised by operators and beginners alike. Try this new Vibroplex key! You'll be delighted. Other new popular Vibroplex keys from \$12.95 up. At your dealer or

THE VIBROPLEX CO., INC. 833 Broadway, N. Y. 3, N. Y.

Two chess games were completed recently on the ham bands between the Federal Chess Club of Washington, D.C., and the Army's Records Administration Center in St. Louis. *W3PZA* handled the first game, and *W3CQD* the second, with *WØTCE* on the St. Louis end. . . . A phone vs. CW contest livened up a recent meeting of the Potomac Valley RC when two keys, two sets of phones, and enough wire to span 30 feet were set up for the CW spots, and two sets of sound-powered phones, separated by the same distance. The object of the contest was to make the best copy possible in the shortest time. Message texts varied from plain language to difficult code groups, with both sides handling duplicate copies. Errors, spelling and omissions deducted from a perfect score. *W4KFC* and *W3GRF* on CW vied with *W4ESK* and *WANTZ* on phone, both sides doing good jobs. CW came out ahead, but results are not considered conclusive. Similar contests are suggested for other clubs, and copies of suggested rules will be sent to anyone interested by applying to *W4KFT*, 5325 North 26th St., Arlington, Va.

Changes in planning in civil defense amateur radio are leading to better organizations all over the country. More complete coverage is being planned, and local CD officials are installing motor-driven generators in many spots to assure continuance of operation under all conditions. Of course, auxiliary power should be the first consideration in such plans, but, as ever, until an actual emergency arises in communications, little thought is given to it. Amateur radio in civil defense is being considered largely because of its ability to furnish communications under any and all emergency conditions, yet too few of the so-called emergency installations include emergency power. Well-planned stations will not only provide for such power for the operation of radio gear, but will also consider the need for lighting to enable others at control centers to carry on with their work in the event of a power failure. Radio messages cannot be processed unless sufficient overall lighting is provided. Bring this matter to the attention of your local CD officials where it has not as yet been considered.

Birthday greetings to *W1PCH*, *W1CJD*, *W4VR*, and *W4MWH*.

## CQ'S 1950 DX CONTEST

(from page 35)

### FRENCH MOROCCO

14 mc.	STATION	COUNTRIES	ZONES	SCORE
	CN8EX	45	14	35,695

### LIBYA

14 mc.	MD2AM	21	7	3,108
28 mc.	MD2AF	27	12	12,909

### SOUTHERN RHODESIA

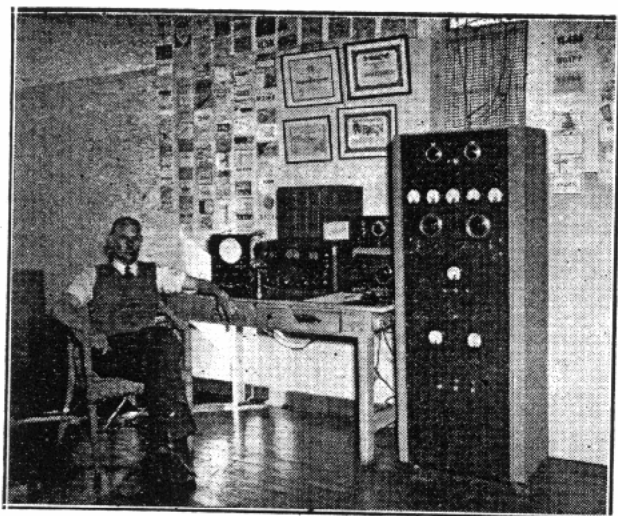
All bands	ZE2KH	27	18	10,710
-----------	-------	----	----	--------

### TUNISIA

14 mc.	3V8AJ	13	3	1,104
--------	-------	----	---	-------

### UNION OF SOUTH AFRICA

All bands	ZS6JS	58	35	50,034
-----------	-------	----	----	--------



ZS6JS scored 50,034 points. Charles runs about 100 watts into a pair of 814's. For antennas he uses a 4-element rotary on 10 meters and a 3-element job for 20—both being mounted on a 60-foot tower.

### Asia-Single Operator Stations

#### ARABIA

All bands	STATION	COUNTRIES	ZONES	SCORE
	HZ1KE	18	11	3,219

#### BURMA

All bands	XZ2SY	63	34	35,793
14 mc.	XZ2SY	29	15	8,624
28 mc.	XZ2EM	39	19	12,760
	XZ2SY	34	19	9,169

#### HONG KONG

All bands	VS6AM	37	22	13,334
	VS6AE	15	14	1,073
14 mc.	VS6AE	5	5	60
	VS6AM	3	3	24
28 mc.	VS6AM	34	19	11,766
	VS6AE	10	9	209

#### ISRAEL

All bands	4X4RE	72	32	74,048
-----------	-------	----	----	--------

#### SINGAPORE

All bands	VS1DZ	23	21	7,920
-----------	-------	----	----	-------

#### SUMATRA

All bands	PK4DA	23	18	5,084
-----------	-------	----	----	-------

#### TURKEY

28 mc.	TA1AT	6	4	390
--------	-------	---	---	-----

### Oceania-Single Operator Stations

#### AUSTRALIA

All bands	VK2AMV	26	20	6,348
-----------	--------	----	----	-------

#### GILBERT ISLANDS

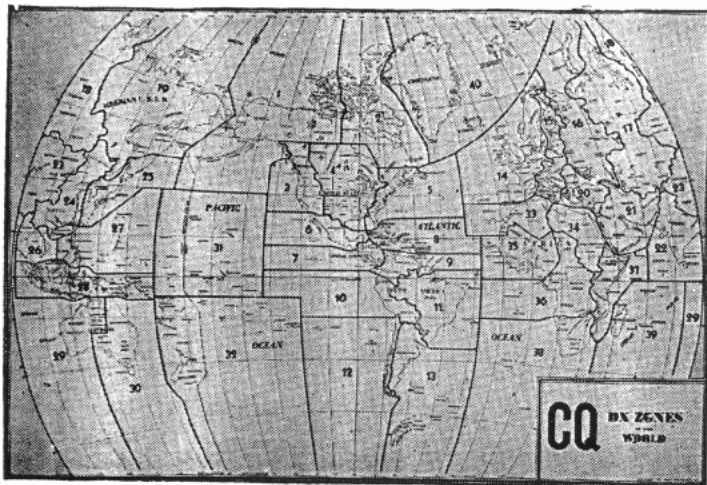
14 mc.	VR1C	24	17	12,546
--------	------	----	----	--------

#### HAWAII

All bands	KH6IJ	55	36	100,464
	KH6BA	42	27	20,148
14 mc.	KH6IJ	29	20	20,384
	KH6LG	27	24	16,728
	KH6AEX	24	15	9,945
28 mc.	KH6IJ	16	26	28,886
	KH6ADK	16	12	8,148

#### NEW ZEALAND

All bands	ZL1MQ	28	24	10,920
14 mc.	ZL1MQ	21	17	5,738
	ZL4GA	10	8	558
28 mc.	ZL1MQ	7	7	826



Again Available

## DX ZONES

### MAP OF THE WORLD

Size 34" x 28"—Beautifully lithographed in 4 colors, on map stock suitable for framing.

*Dress up your operating room with this beautiful "WAZ" Zone map. Complete, revised, and up to date in every respect! All countries and prefixes in each DX Zone are clearly shown. Order your today!*

**\$1.00**

postpaid  
anywhere

Send a check or money order for \$1 (or equivalent in U. S. currency for foreign residents)

#### CQ MAGAZINE

67 West 44 Street, New York 18, N. Y.

Sirs: I enclose \$1.00 for which please send me a WAZ DX ZONE MAP OF THE WORLD.

Name .....

Address .....

City ..... Zone ..... State .....



**OKINAWA**

14 mc. KR6FA 20 15 5,565

**WESTERN SAMOA**

14 mc. ZM6AK 8 5 156

Thanks to the following for sending in logs for checking purposes: DL4FS, DL4FQ, F900, OZ7HT, EA8BC, G2AJB, G8CS, VE2ID, VE8MJ, KG6HN, ZS2DG, G2MI, ZS6JF, ZS6VX, W0DEA, W0DEB, VP2GE, KZ5BL, KS4AC, ZE3JJ, ZS7C, AR8AB, LU4MW, LU4MG, W6-RMG/HL1 (phone and c.w.).

**DX & OVERSEAS***(from page 40)*

It cost me 14¢ postage to find out G6ZO worked FR7ZA and FG7XA. That's ok, Jim, whenever that happens we just knock off a country or two. Hi.

**Zone Maps**

Some of you have asked for zone maps. Just send \$1.00 to our New York office and they will take care of the rest. After all, W2ESO has to have something to do.

ZL2GX tells me that to date the following Ws have been awarded their WAP certificates: 6MX, 6OMC, 3GHD, 2QHH, 6BVM, 1ENE, 8PQQ and 2WZ. Only VE is VE7HC. This award is now available with a special phone endorsement where all 30 contacts were on two-way phone. Only 3 phone awards so far, with No. 2 to HC2JR. ZL2GX has been doing a little house hunting and found a spot really designed for a ham. It has a shack conveniently located (to what, Jock?) and plenty of terra firma. Sure, he expects to do a little "sky gardening".

April was good to W4HA.....two-way phone "brung" him FE8AA, CR4AC, FG7XA, ZD6HJ, KC6WC and ZS7C.

**Who's kidding Who?**

During the past years, and it seems to be gaining momentum, there have been a number of the DX men who have tried to put it over on us in sending in their cards for WAZ. Again I say, "Who's kidding who?" I think if the whole story were to be told in print and it might, it would make most of you wonder what sort of a hobby we're mixed up in. If some of the calls were printed it would make you shudder. Some of the cards that are faked, forged or otherwise distorted are pretty first class jobs of workmanship.....but just not good enough. For the life of me I can't figure out what these stupid people think they're gaining. It's mighty unpleasant everytime we run across one of these jobs and each time I am tempted to literally lay all the cards on the table, and expose the whole thing to you fellows. It might yet happen.

As you can see the DX lowdown this month is, of necessity, quite brief. W2ESO said if I took up much more of the magazine in scores etc., we might as well rename it.....DX. Well, what's wrong? Say, if you boys would start spreading the word around over seas about our World Wide DX Contest you'd help cook up even more interest than we had last year. Tell the boys to send for Contest Rules and Log forms.....out of the New York office, as usual. Enough for now. 73.

**ATTENTION  
MOBILE HAMS**

COMPLETE MOBILE PACKAGE — NOTHING ELSE TO BUY. OUTSTANDING MOBILE SIGNALS USE MOTOROLA EQUIPMENT — BACKED BY YEARS OF COMMUNICATION EQUIPMENT EXPERIENCE — WORLD'S LARGEST PRODUCER OF 2-WAY MOBILE EQUIPMENT.

A mobile transmitter with a double feature FM or AM at flip of the switch, the MOTOROLA FMT-30-DMS 27-30 MC. . . \$130.00

P-7253 spring base rear-mount antenna. \$24.75

MOTOROLA P-69-13 or 18-ARS receiver with special noise limiter for use

with any converter having 1440-3000 KC \$60.00  
New Gon-set Tri-Band Spread Converter \$47.60  
3-30 famous Gon-set converter complete to connect to the P-69-13 or 18-ARS receiver . . . . . \$39.95  
P-327-E Fire wall loud speaker . . . . . \$5.00

The above comes complete with all necessary accessories and mounting hardware. Order direct or through the Motorola National Service Organization member in your area.

NOTE: This Receiver and Transmitter is equipment which has been returned from the field, modified and rebuilt for Amateur Service.

For further information write to:

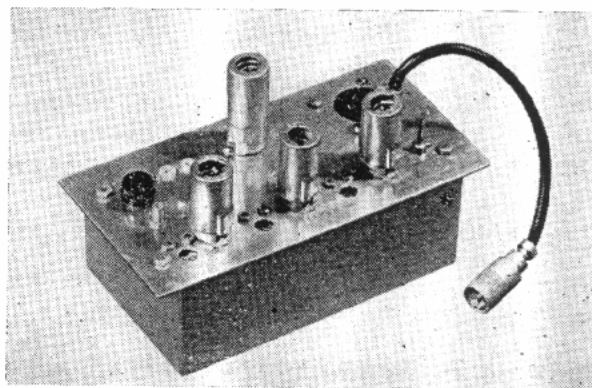
**MOTOROLA INC.**

Amateur Sales Dept. CQ August

1327 W. Washington Blvd., Chicago 7, Ill.

Attention: Harry Harrison W9LLX

Telephone—Taylor 9-2200, Ext. 161

**NEW! NEW! NEW!  
CRYSTAL CONTROL CONVERTERS**

- NOW! Revamp and Modernize your old receiver with one of these high gain converters
- 2 Band-Pass R.F. Stages
- Crystal Controlled Oscillator
- Built-in Transformer Type Power Supply
- 5 Models available for 2, 6, 10-11, 15, and 20 meters
- Economical — ONLY \$21.50 Net

FOR ANY MODEL, LESS TUBES AND CRYSTAL

- Write for Bulletin CC-1

**SYLVAN ELECTRONIC LABS.**  
BROADALBIN, NEW YORK