

CW Section Results

CQ's 1951 DX Contest

HERB BECKER, W6QD and ANDY ELSNER, W6ENV

After some delay, the final scores for the 1951 World Wide DX Contest have been completely tabulated and after you take a look at them, I am sure you will agree that if all the points were placed end to end, they would make a good size piece of mileage.

We are showing a few photos of stations with leading scores. There are many others, it seems to us, whose pictures should also be in here, but due to limited time, it was impossible to include all of them. For example, W4KFC, with 198,195, was the highest in the U.S.A. No picture being available, we could refer you to the one we ran last year, and with the addition of a few gray hairs, Vic would look about the same. Others in this category are W8JIN, 191,102, and ON4QF with 116,844.



4X4BX with 444,216 points was world's highest. Rig uses 813 with 125 watts input and the receivers were an SX-28 and SX-71. Sam and XYL are shown above just a few minutes before contest started. His comment, "It is THE contest of the year."

Here is a quick rundown on some of the largest scores. Again, I would like to add that where the high scores all attract attention from a competitive viewpoint, let's not overlook the contestants with the smaller scores.

First, take a look at a few of the multiple-operator stations: W7DL 100,240; ZC4XP 250,677; DL1AT 116,365.

Now for the single-operator stations: W6MVQ 128,502; W9LM 116,688; W2WZ 145,888; W1BFT 63,342; OK1HI 122,108; G2AF 123,422; DL1FI 120,801; PAØUN 138,710; CN8EG 176,278; ZS6OW 182,952; 4X4DF 119,194; KH6IJ 272,271; KH6MG 165,132; and KV4AA 111,628 who is eligible for the 1951 certificate. Staff members, as you know, are not eligible for awards, but at that time, Dick had not joined CQ's family. (Too bad, Dick, no certificate for you in the 1952 contest. Hi!!)

Countries in which there has been only one participant will show the score under the All-Band Section on'y. Certificates will be awarded in accordance with the Contest rules, and those stations receiving them are shown in bold-face type.

Multiple Operator Stations

	STATION	ZONES	COUNTRIES	SCORE
United States				
All Bands	K2FAL	31	35	8,976
	(W2EHQ, W3QOT, W1ZXW)			
All Bands	K4WAR	59	85	57,304
	(W2LDW, W3QXU, W4S10, W4RWZ, W4RVE, W4OCG, W6MDC, WØBVI, WØBVJ, WØBHT)			
All Bands	W6AM	68	96	104,012
	(W6ADP & W9SRB)			
	W6VDG	61	76	50,142
	(W6EAE)			
	W6YX	33	47	27,280
	(W6TOT, W600U, W6JHT, W5OLH)			
3.5 mc.	W6AM	7	7	504
	W6VDG	6	5	132
7 mc.	W6AM	15	16	4,526
	W6YX	10	9	1,539
	W6VDG	11	11	1,166
14 mc.	W6CYI	34	72	81,514
	(W6TZO)			
	W6FOZ	31	62	59,985
	(W6BPD)			
	W6IBZ	30	60	43,290
	(W6HJT)			
	W6AM	27	52	29,783
	W6YX	23	38	15,860
	W6VDG	24	37	13,603
28 mc.	W6VDG	20	23	3,354
	W6AM	19	21	2,960
All Bands	W7DL	52	88	100,240
	(W7RT)			
All Bands	W9TQL	24	55	25,517
	(W9PGW)			
All Bands	WØAIW	57	85	68,586
	(W6ZSF, WØFNO, WØUQV)			

10 OCT

Canada All B

Cyprus All B

Denmark All B

England All B

Eritrea All B

Finland All B

All B

3.5 mc

7 mc

14 mc

28 mc

Hawaii All B

Japan 14 mc

Marianas 14 mc

NORTH

United States All B

3.5 mc

7 mc

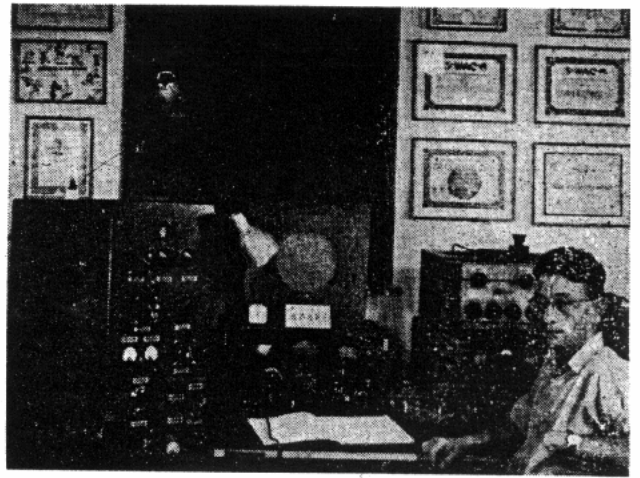
14 mc

	STATION	ZONES	COUNTRIES	SCORE
Canada				
All Bands	VE4RO (VE4XO)	71	109	142,200
Cyprus				
All Bands	ZC4XP	42	119	250,677
Denmark				
All Bands	OZ2PA (OZ4KX & CZ3QA)	38	119	92,316
England				
All Bands	G3HSN (G3HEJ)	24	60	21,168
Eritrea				
All Bands	MI3US (MI3ZX, MI3JV, MI3NJ, MI3RH, MI3DW, MI3SL)	35	74	86,437
Finland				
All Bands	OH3OX (OH3QB, OH3QL, OH3QP, OH3RJ, OH3RK)	6	29	2,345
All Bands	DL1AT (DL1AU)	57	128	116,365
	DL3LU (DL3LM)	45	119	83,968
	DL1PK (DL1CS, DL3BK, DL6YX)	44	100	42,912
3.5 mc.	DL1AT	4	22	1,482
	DL3LU	4	24	1,456
	DL1PK	5	17	748
7 mc.	DL1AT	13	36	7,105
	DL3LU	10	32	5,586
	DL1FK	6	22	1,540
14 mc.	DL1AT	28	52	28,800
	DL3LU	25	55	23,760
	DL1FK	21	43	9,536
28 mc.	DL1AT	12	18	2,010
	DL1FK	12	18	1,800
	DL3LU	6	8	420
Hawaii				
All Bands	KH6WO/KH6 (KH6's—ABI, ABO, AGB, AGX, AN, AS, DQ, ZZ, GN, OS, PA, RU, TD, WJ, ADY)	47	53	119,300
Japan				
14 mc.	JA2KW (W3KYF, W6QOY, W5MSH, W2DES, W0AEK, W6EDG, W6ZDF)	24	43	58,290
	JA2DS	20	36	27,048
Marianas Islands				
14 mc.	KG6AAY	25	54	58,776

NORTH AMERICA— Single Operator Stations

	United States	ZONES	COUNTRIES	SCORE
All Bands	W1BFT	58	95	63,342
	W1DIT	38	55	20,739
	W1RY	43	56	19,206
	W1ODW	39	48	15,135
	W1QMM	24	33	5,358
	W1JIY	13	19	1,728
	W1ONV	12	14	806
	W1PLJ	5	6	270
3.5 mc.	W1BFT	6	7	156
	W1ODW	5	5	110
7 mc.	W1DIT	20	26	5,750
	W1RY	20	28	5,280
	W1RWP	15	20	3,640
	W1BFT	13	21	2,720
	W1ODW	4	5	108
	W1QMM	5	6	88
	W1ONV	2	2	16
14 mc.	W1DEP	20	44	22,848
	W1BFT	20	44	14,400
	W1HA	20	34	6,372
	W1DIT	18	29	4,606
	W1ODW	17	23	4,360
	W1QMM	18	28	3,056
	W1RY	14	17	1,612
	W1APA	6	14	1,220
	W1ONV	10	12	594
	W1JIY	7	11	504
	W1PLJ	3	4	21

	STATION	ZONES	COUNTRIES	SCORE
28 mc.	W1BFT	19	23	4,074
	W1ODW	13	15	1,484
	W1RY	9	11	640
	W1JIY	6	8	364
	W1PLJ	2	2	24
All Bands	W2WZ	68	120	145,888
	W2GNQ	44	61	30,975
	W2ATE	39	53	18,308
	W2EQS	38	51	15,130
	W2CJM	32	43	10,275
	W2BXZ	33	39	7,992
	W2DJT	32	32	7,552
	W2BJH	23	35	7,540
	W2WC	25	29	6,372
	W2BO	18	28	5,336
	W2CWK	20	26	3,588
	W2ZQW	13	16	2,320
	W2NHH	3	3	72



4X4RE scored 441,196 points this year. Receivers: SX-28 and HQ-129X. Power input about 250 watts. Egon says, "Most interesting contest of them all."

3.5 mc.	W2WZ	8	12	580
	W2WC	8	8	240
	W2EQS	6	6	168
	W2CWK	5	6	55
7 mc.	W2WZ	17	28	5,760
	W2WC	17	21	3,914
	W2OTC	17	22	3,627
	W2EQS	12	14	1,898
	W2GNQ	14	15	1,740
	W2ATE	12	15	1,269
	W2BXZ	12	14	1,118
	W2BO	9	12	1,029
	W2WWP	7	7	546
	W2DJT	8	6	196
	W2CWK	3	3	54
	W2BJH	2	3	50
	W2CJM	4	4	40
	W2NHH	2	2	36
14 mc.	W2WZ	26	59	46,155
	W2TXB	19	41	15,189
	W2GNQ	16	31	8,554
	W2AZS	20	28	7,676
	W2MHE	17	30	5,358
	W2ATE	16	25	4,141
	W2BJH	15	25	4,000
	W2CJM	14	24	3,420
	W2QKJ	8	23	2,449
	W2ZQW	13	16	2,320
	W2HMJ	12	19	2,108
	W2CWK	12	17	1,856
	W2EQS	11	20	1,798
	W2BO	9	16	1,675
	W2JB	12	16	1,372
	W2CDP	11	18	892
	W2DJT	8	7	380
	W2BXZ	6	7	221
	W2GT	4	5	162
28 mc.	W2WZ	17	21	2,888
	W2DJT	16	19	2,870
	W2BXZ	15	18	1,683
	W2GNQ	13	15	1,512
	W2ATE	11	13	1,224

V6MVQ
W1BFT
DL1FI
ZS60W
KH6MG
ible for
i know,
e, Dick
ick, no
)

participa-
ion on'y.
with the
tem are

SCORE
8,976

57,304
W4RVE,
W0BHT)
104,012

50,142

27,280

504
132

4,526
1,539

1,166
81,514

59,985

43,290

29,783
15,860

13,603
3,354

2,960
100,240

25,517

66,586

	STATION	ZONES	COUNTRIES	SCORE
	W2CJM	14	15	1,218
	W2EQS	9	11	500
	W2BJH	6	7	260
	W2NHH	1	1	6
	W2KZE	1	1	6
All Bands	W3MSK	70	110	96,292
	W3PDX	57	86	50,479
	W3ALB	39	69	36,180
	W3A00	38	66	28,184
	W3ZQ	33	38	12,709
	W3GHD	27	40	10,854
	W3JO	26	31	5,301
	W3FQB	23	30	4,611
	W3EPR	15	17	2,112
3.5 mc.	W3MSK	9	14	598
	W3PDX	8	7	285
	W3ALB	2	4	48
	W3EPR	1	1	2
7 mc.	W3MSK	20	27	6,580
	W3A00	13	14	1,782
	W3JO	12	14	1,274
	W3ALB	8	12	940
	W3PDX	9	9	450
	W3EPR	5	4	144
	W3OLI	4	3	84
	W3GHD	2	2	16

	STATION	ZONES	COUNTRIES	SCORE
7 mc.	W4KFC	19	34	11,395
	W4ESK	18	25	4,214
	W4IMI	13	10	828
	W4KE	9	11	800
	W4TO	8	10	540
	W4SAT	8	9	478
	W4DCE	7	7	280
14 mc.	W4ESK	24	59	55,029
	W4KFC	24	63	43,253
	W4TO	25	55	28,080
	W4AZK	26	52	17,706
	W4OM	23	47	17,150
	W4KE	20	40	13,880
	W4PHJ	20	36	10,640
	W4LVV	22	35	7,695
	W4DCE	24	40	6,720
	W4IZR	19	24	4,257
	W4IMI	18	21	2,418
	W4SAT	17	20	2,072
	W4EE0	12	15	1,242
	W4NEP	10	11	693
28 mc.	W4ESK	20	28	6,816
	W4KFC	19	25	5,280
	W4KE	12	13	1,150
All Bands	W5ZD	58	82	56,712
	W5KC	48	75	39,360
	W5AWT	24	29	3,657
3.5 mc.	W5ZD	2	6	16
7 mc.	W5ZD	16	15	2,418
	W5KC	12	16	2,128
	W5FWA	11	11	704
	W5AWT	4	4	64
14 mc.	W5ZD	25	43	18,156
	W5DQV	23	42	15,145
	W5KC	25	48	14,454
	W5AWT	20	25	2,745
	W5JPC	10	10	400
23 mc.	W5ZD	15	18	2,013
	W5KC	11	11	1,012
All Bands	W6MVQ	78	120	123,502
	W6DFY	69	102	104,652
	W6FSJ	38	70	54,216
	W6IBD	48	57	36,015
	W6ATO	51	55	34,450
	W6BJU	39	48	23,296
	W6QDE	32	40	18,000
	W6HCH	35	37	17,856
	W6BYH	31	30	8,662
	W6GEB	29	28	6,384
	W6EJA	13	17	2,670
	W6GWQ	21	21	2,646
	W6OKK	10	9	1,073
3.5 mc.	W6MHB	10	11	1,071
	W6MVQ	10	10	820
	W6IBD	8	8	624
	W6DFY	6	5	308
	W6ATO	4	5	117
	W6BYH	5	4	45
	W6HOH	3	3	42
	W6QDE	2	2	40
7 mc.	W6IBD	23	29	11,336
	W6DFY	16	20	5,004
	W6MVQ	17	20	4,699
	W6HOH	13	16	3,219
	W6ATO	11	11	1,914
	W6FSJ	11	16	1,080
	W6BJU	8	8	672
	W6EJA	5	7	300
	W6RYH	5	5	200
	W6QDE	3	3	144
	W6OKK	5	5	90
	W6GEB	4	4	88
	W6GTC	4	4	72
14 mc.	W6BAX	32	71	76,117
	W6ENV	32	63	42,845
	W6MVQ	31	68	39,105
	W6FSJ	27	54	34,880
	W6SRF	30	59	34,087
	W6DFY	29	58	31,929
	W6PYH	24	32	20,048
	W6ATO	24	27	8,721
	W6BJU	19	29	8,688
	W6QDE	19	26	6,785
	W6HOH	19	18	4,810
	W6AJQ	17	18	3,815
	W6RYH	14	15	2,881
	W6MUF	10	19	2,697
	W6GEB	14	14	2,128
	W6RLQ	14	16	1,260
	W6TXL	14	15	984

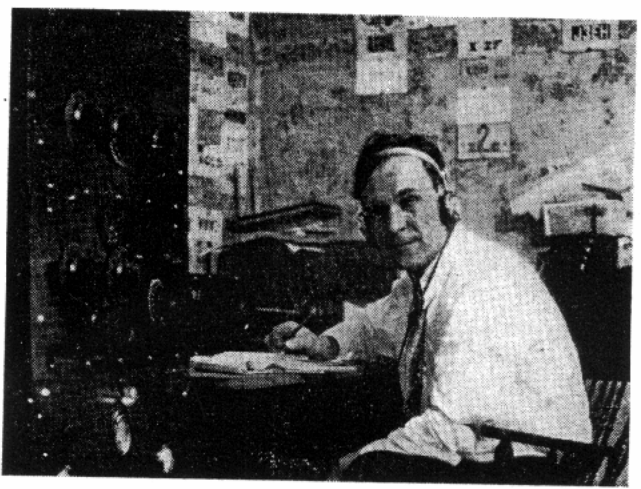


W8WZ scored 147,084 points. Doc runs a kw. into a pair of 250THs. Receiver is a 75A2. Antenna for 10-20 are 3 element beams, on 40 he uses 3 Bobtails, and on 80 a ground plane.

14 mc.	W3JTC	28	67	62,700
	W3GHD	2	2	16
	W3PDX	24	49	17,301
	W3A00	25	52	15,785
	W3MSK	23	47	13,550
	W3MFW	22	31	11,124
	W3ALB	23	56	10,619
	W3LXE	18	29	9,823
	W3ADZ	18	30	6,384
	W3NCF	22	30	6,032
	W3GHD	15	23	2,888
	W3FQB	15	21	2,448
	W3ZQ	12	16	1,652
	W3JO	14	17	1,364
	W3LVJ	11	14	1,100
	W3EPR	4	5	117
28 mc.	W3ZQ	21	22	5,160
	W3MSK	18	22	3,800
	W3PDX	16	21	2,664
	W3GHD	10	15	2,050
	W3EPR	5	7	432
	W3FQB	8	9	323
	W3ALB	6	7	247
All Bands	W4KFC	76	143	198,193
	W4ESK	70	121	175,338
	W4KE	46	70	37,488
	W4TO	33	65	37,338
	W4DCE	31	47	9,750
	W4IMI	31	31	6,076
	W4SAT	25	29	4,536
3.5 mc.	W4KFC	14	21	2,135
	W4ESK	8	9	255
	W4KE	5	6	99

TRIES	SCORE
34	11,395
25	4,214
10	828
11	800
10	540
9	476
7	280
59	55,029
63	43,263
55	28,080
52	17,700
47	17,150
40	13,880
36	10,840
35	7,695
40	6,720
24	4,257
21	2,418
20	2,072
15	1,242
11	693
28	6,816
25	5,280
13	1,150
82	56,712
75	39,360
29	3,657
6	16
15	2,418
16	2,128
11	704
4	64
43	18,156
42	15,145
48	14,454
25	2,745
10	404
18	2,013
11	1,012
20	123,502
22	104,852
70	54,216
57	36,015
55	34,450
18	23,296
10	18,000
17	17,856
10	8,662
18	6,384
7	2,670
11	2,646
9	1,073
1	1,071
0	820
8	624
5	308
5	117
4	45
3	42
2	40
9	11,336
0	5,004
0	4,699
6	3,219
1	1,914
3	1,080
3	672
7	300
5	200
3	144
5	90
1	88
1	72
1	76,117
1	42,845
1	39,105
1	34,880
1	34,087
1	31,929
1	20,048
1	8,721
1	8,688
1	6,785
1	4,810
1	3,815
1	2,881
1	2,697
1	2,128
1	1,260
1	986

STATION	ZONES	COUNTRIES	SCORE
W6EJA	7	9	976
W6DBP	12	12	888
W6GWQ	10	9	532
W6OKK	10	9	532
28 mc. W6WJX	20	24	4,400
W6MVQ	20	22	3,612
W6IBD	17	20	3,172
W6DFY	18	19	2,886
W6ATO	12	12	1,296
W6BJU	12	11	1,035
W6GWQ	11	12	805
W6GEB	11	10	525
W6RYH	7	6	234
W6QDE	8	9	43
W6EJA	1	1	6
All Bands W7AJS	34	47	26,001
W7FQE	45	46	22,204
W7NLI	32	35	13,534
W7FYN	28	40	13,532
W7AHX	22	22	6,468
W7HXG	21	22	5,805
W7LNG	16	16	2,016
3.5 mc. W7PQE	5	4	153
W7NLI	4	4	112
7 mc. W7FYN	11	14	2,184
W7PQE	10	8	990
W7AJS	9	7	832
W7NLI	6	7	442
W7LNG	6	6	300
W7HXG	7	6	273
14 mc. W7PGX	29	56	33,405
W7AJS	25	40	17,485
W7PQE	18	23	5,125
W7NLI	14	16	3,750
W7FYN	14	22	3,600
W7AHX	16	15	3,224
W7HXG	9	11	2,120
W7HAD	7	5	372
W7LNG	5	5	250
23 mc. W7PQE	12	11	1,081
W7AHX	6	7	559
W7NLI	8	8	464
W7HXG	5	5	80
W7FYN	4	4	64
W7LNG	5	5	60
All Bands W8JIN	76	138	191,102
W8WZ	72	132	147,084
W8DAW	57	81	61,548
W8HFE	24	57	20,655
W8ZCK	27	35	10,106
W8FJR	24	97	5,141
W8DAE	24	25	3,479
W8PM	14	16	990
W8FRD	6	5	44
3.5 mc. W8WZ	10	12	704
W8JIN	9	9	486
W8DAW	5	4	45
W8DAE	3	2	25
W8FRD	3	2	5
7 mc. W8WZ	21	34	8,635
W8JIN	18	29	8,037
W8ZCK	16	18	4,114
W8DAW	10	9	1,197
W8DAE	6	5	154
W8PM	4	5	99
W8FRD	3	3	27
14 mc. W8JIN	30	75	62,265
W8WZ	24	61	34,170
W8HFE	23	56	20,145
W8DAW	23	43	17,952
W8PUD	25	37	9,610
W8AL	12	15	1,420
W8ZCK	10	18	1,014
W8DAE	8	10	666
W8FJR	8	10	378
W8KC	7	8	330
W8PM	5	5	70
23 mc. W8CCJ	19	28	6,157
W8WZ	17	25	5,460
W8DAW	19	25	4,664
W8JIN	19	25	4,620
W8FJR	14	17	2,356
W8DAE	7	8	225
W8ZCK	1	1	6
All Bands W9LM	75	112	116,688
W9RQM	67	100	86,673
W9HUZ	59	72	36,156
W9TB	40	60	35,000
W9NII	55	62	29,835



VE4RO ran up 142,200 points. George has a final amp. for each band: 10 m. pp 250THs, 11 m. 250TLs, 20 m. pp 450THs, 40 m. pp 270As, 80 m. 833A. Antennas: 10-11 m; two sterbas, three Vs, 20 m; two lazy Hs, three Vs, 40 m; two zepps, full wave; two half-waves for 80 m. Receiver: HRO-7.

STATION	ZONES	COUNTRIES	SCORE
W9EXY	38	57	28,505
W9KXX	22	27	5,047
W9FKC	18	25	3,225
W9UC	15	14	1,769
W9GWK	14	16	1,650
3.5 mc. W9LM	9	9	414
W9RQM	7	6	299
W9HUZ	6	5	99
W9NII	5	4	45
7 mc. W9LM	19	24	6,450
W9RQM	15	20	4,550
W9HUZ	12	14	2,314
W9NII	12	13	1,775
W9GWK	3	3	72
W9FKC	3	3	42
14 mc. W9LM	26	51	24,024
W9FID	28	51	23,700
W9RQM	25	45	15,890
W9TB	22	40	14,656
W9EXY	24	35	12,803
W9GIL	20	29	7,350
W9HUZ	24	35	6,490
W9NII	18	23	3,690
W9FKC	15	22	2,516
W9GWK	11	13	1,032
W9KXX	5	6	132
28 mc. W9RQM	20	29	6,811*
W9LM	21	28	6,811*
W9QM	18	24	4,494
W9TB	18	20	4,480
W9NII	20	22	3,738
W9KXX	17	21	3,458
W9EXY	14	21	2,952
W9HUZ	17	18	2,380
W9UC	13	13	1,586
W9LWD	6	7	221
* Tie for first place.			
All Bands W0TKX	47	68	37,375
W0DAE	43	47	14,490
W0ARH	19	20	2,379
W0GUV	16	19	1,575
W0JZX	13	12	500
W0DBN	11	11	462
3.5 mc. W0NWX	10	10	1,220
W0DAE	6	6	132
W0TKX	5	4	45
W0DBN	2	2	4
7 mc. W0DAE	17	20	3,404
W0TKX	14	17	2,480
W0JZX	7	7	168
W0DBN	2	2	4
14 mc. W0TKX	28	47	18,000
W0ERI	23	33	7,616
W0DAE	11	13	888

	STATION	ZONES	COUNTRIES	SCORE
	W0GUV	6	6	713
	W0DBN	7	7	304
	W0JZX	6	5	88
	W0ARH	2	3	9
28 mc.	W0ARH	17	17	1,972
	W0DAE	9	8	357
	W0IUB	7	7	282
	W0GUV	6	6	168
Canada				
All Bands	VE1IM	17	23	3,440
	VE1EK	15	25	3,080
	VE1CU	14	22	2,870
3.5 mc.	VE1IM	2	4	30
7 mc.	VE1IM	3	3	90
	VE1EK	3	3	24
	VE1CU	3	3	18
14 mc.	VE1EK	12	22	2,484
	VE1CU	12	15	1,512
	VE1IM	8	13	1,113
	VE1DB	7	8	615
28 mc.	VE1IM	4	3	91
	VE1CU	4	4	88
All Bands	VE2BV	22	29	5,661



OQ5RA ran up 124,752 points. This was Andy's first contest since becoming a ham May 2, 1948. Rig uses a pair of 807s, 75 watts. Receiver is a BC-342.

14 mc.	VE2BV	13	19	2,528
	VE2WA	15	16	1,891
	VE2CK	14	19	1,518
28 mc.	VE2BV	9	10	608
All Bands	VE3CCK	37	66	39,655
	VE3ZW	26	44	14,280
	VE3DT	29	37	8,448
	VE3BBR	27	32	8,076
	VE3AGX	28	31	7,139
	VE3HB	19	24	4,343
	VE3LJ	17	17	2,414
3.5 mc.	VE3AGX	7	7	490
	VE3BBR	3	2	55
7 mc.	VE3CCK	13	15	1,820
	VE3BBR	10	12	1,298
	VE3AGX	6	6	264
	VE3DT	6	6	204
	VE3LJ	5	3	56
	VE3ZW	1	1	2
14 mc.	VE3CCK	24	51	24,000
	VE3ZW	25	43	13,804
	VE3ADM	16	18	5,202
	VE3AGX	15	18	2,112
	VE3LJ	12	14	1,664
	VE3DT	9	16	1,325
	VE3BBR	8	13	1,176
	VE3HB	4	4	64
28 mc.	VE3HB	15	20	3,255
	VE3DT	14	15	1,682
	VE3BBR	6	5	121
All Bands	VE4TJ	28	34	8,246

	STATION	ZONES	COUNTRIES	SCORE
All Bands	VE5QZ	28	33	9,760
	VE5EH	18	8	1,800
7 mc.	VE5QZ	4	4	192
14 mc.	VE5QZ	16	21	3,885
	VE5EH	5	4	612
28 mc.	VE5QZ	8	8	496
	VE5EH	5	4	288
14 mc.	VE6MN	11	13	1,872
All Bands	VE7VC	32	48	24,800
	VE7EH	28	27	14,630
	VE7KC	23	33	7,168
3.5 mc.	VE7EH	5	4	225
7 mc.	VE7EH	9	8	1,734
	VE7VC	9	7	528
	VE7KC	3	3	72
14 mc.	VE7VO	23	36	19,588
	VE7VC	23	41	17,728
	VE7KC	10	19	2,378
	VE7EH	9	11	2,140
23 mc.	VE7YR	11	11	1,078
	VE7KC	10	11	714
	VE7EH	5	4	288
All Bands	VE8RY	9	10	1,615
14 mc.	VO6A	8	21	3,190

Alaska				
All Bands	KL7UM	29	42	26,554
	KL7NXI	17	14	4,898
	KL7MF	16	17	3,861
3.5 mc.	KL7MF	1	1	2
7 mc.	KL7UM	10	12	2,882
	KL7RZ	6	6	852
	KL7NXI	5	4	270
	KL7MF	5	6	187
14 mc.	KL7UM	12	23	7,525
	KL7KQ	11	14	4,600
	KL7NXI	10	8	2,622
	KL7MF	6	7	1,053
	KL7PI	5	5	530
28 mc.	KL7UM	7	7	392
	KL7MF	4	3	126
	KL7NXI	2	2	36

Bermuda				
14 mc.	VP900	18	25	12,126

Canal Zone				
All Bands	KZ5RG	14	15	4,321
	KZ5CS	19	16	2,485
3.5 mc.	KZ5CS	4	3	217
7 mc.	KZ5RG	6	7	858
	KZ5CS	7	5	252
14 mc.	KZ5CW	8	10	2,286
	KZ5RG	8	8	1,360
	KZ5CS	8	8	304

Cuba				
14 mc.	CO6NF	17	22	11,388
	CO2PY	8	7	1,920
28 mc.	CO2BC	7	7	924

Greenland				
14 mc.	OX3GD	15	27	17,220
	OX3GG	9	12	3,066

Honduras				
All Bands	HR1DF	15	18	6,006

Mexico				
All Bands	XE1SA	29	25	14,958

Puerto Rico				
All Bands	KP4KD	53	81	43,550
14 mc.	KP4JE	15	30	11,746
	KP4KD	20	38	7,656

Swan Island				
All Bands	KS4AQ	23	23	8,694

Turks & Caicos Islands				
All Bands	VP5BF	17	12	6,989

Virgin Islands				
All Bands	KV4AA	50	68	111,628

SOUTH

Argentina
All Bands

3.5 mc.
7 mc.

14 mc.

28 mc.

Bolivia
All Bands

Brazil
All Bands

7 mc.

14 mc.

28 mc.

Chile
All Bands

14 mc.

28 mc.

Columbia
All Bands

Ecuador
All Bands

Falkland Islands
All Bands

Peru
14 mc.

South Shetland
All Bands

Uruguay
All Bands

7 mc.

14 mc.

28 mc.

Venezuela
All Bands

14 mc.

28 mc.

EUROPE—

Sing

Austria
All Bands

14 mc.

28 mc.

S SCORE
 9,760
 1,800
 192
 3,885
 612
 496
 288
 1,872
 24,800
 14,630
 7,168
 225
 1,734
 528
 72
 19,588
 17,728
 2,378
 2,140
 1,078
 714
 288
 1,615
 3,190
 —
 26,554
 4,898
 3,861
 2
 2,882
 852
 270
 187
 7,525
 4,600
 2,622
 1,053
 530
 392
 126
 36
 12,126
 4,321
 2,485
 217
 858
 252
 2,286
 1,360
 304
 11,388
 1,920
 924
 17,220
 3,066
 6,006
 14,958
 43,550
 11,746
 7,656
 8,694
 6,989
 111,628

SOUTH AMERICA—

STATION	ZONES	COUNTRIES	SCORE
Argentina			
All Bands	LU9EV	39	51
	LU6AX	38	46
	LU1EP	32	32
3.5 mc.	LU1EP	4	2
7 mc.	LU1EP	8	8
	LU6AX	6	5
	LU9EV	5	4
14 mc.	LU6AX	28	38
	LU9EV	24	30
	LU1EP	13	15
28 mc.	LU9EV	10	17
	LU1EP	7	7
	LU6AX	4	3
Bolivia			
All Bands	CP1AQ	18	18
Brazil			
All Bands	PY1ADA	43	76
	PY2CK	31	51
	PY6DU	22	34
	PY2AFS	21	22
	PY1AXP	17	14
7 mc.	PY2AFS	2	2
	PY1ADA	2	2
14 mc.	PY1ADA	29	57
	PY6DU	17	29
	PY1ARZ	16	25
	PY2AFS	13	15
	PY1AXP	12	9
	PY2CK	15	18
28 mc.	PY2CK	16	33
	PY1ADA	12	17
	PY2AFS	6	5
	PY6DU	5	5
	PY1AXP	5	10
Chile			
All Bands	CE6AB	31	36
14 mc.	CE6AB	23	29
	CE3CK	15	19
28 mc.	CE6AB	8	7
Columbia			
All Bands	HK5DH	11	11
Ecuador			
All Bands	HC2KB	22	24
Falkland Islands			
All Bands	VP8AI	26	29
Peru			
14 mc.	OA5A	16	17
South Shetland Is.			
All Bands	VP8AO	12	8
Uruguay			
All Bands	CX1FB	38	48
7 mc.	CX1FB	4	3
14 mc.	CX6AD	17	21
	CX1FB	17	21
28 mc.	CX1FB	17	24
Venezuela			
All Bands	YV5BZ	30	43
14 mc.	YV5AE	23	40
	YV5BZ	23	37
28 mc.	YV5BZ	7	6

EUROPE—

Single Operator Stations

STATION	ZONES	COUNTRIES	SCORE
Austria			
All Bands	OE1LF	8	19
14 mc.	OE1ZZ	27	57
	OE3CC	10	28
	OE1KF	8	20
	OE1YS	5	16
	OE1YZ	4	16
	OE1LF	11	14
28 mc.	OE1LF	6	8

STATION ZONES COUNTRIES SCORE

STATION	ZONES	COUNTRIES	SCORE
Azores Islands			
All Bands	CT2BO	8	14
Belgium			
All Bands	ON4QF	51	131
	ON4GU	30	86
	ON4WZ	21	60
3.5 mc.	ON4GU	4	25
	ON4QF	6	25
7 mc.	ON4GU	9	27
	ON4QF	9	29
	ON4WZ	5	21
14 mc.	ON4QF	27	58
	ON4GU	17	34
	ON4WZ	10	28
28 mc.	ON4QF	9	19
	ON4WZ	6	11
Channel Islands			
All Bands	GC4LI	23	62
Czechoslovakia			
All Bands	OK1HI	55	141
	OK1XQ	31	90



OZ7BG made 114,896 points this year. Erik uses a pair of 813s in the final. Receiver is a German made HRO-type, with selectoject. Erik wants two contests per year.

OK2BDV	32	83	31,050
OK1AW	38	80	25,134
OK3SP	22	61	15,770
OK1CX	25	64	13,884
OK1KO	18	59	11,242
OK1VB	17	58	10,200
OK1UY	17	57	9,176
OK1AEH	11	37	6,860
OK1SV	24	45	6,693
OK1AKA	16	40	5,712
OK2MA	12	30	2,604
OK1ZM	11	30	2,542
OK1AHA	8	25	2,112
3.5 mc. OK1NC	4	29	4,620
OK1HI	5	30	3,290
OK1AKA	4	22	1,222
OK1XQ	3	17	1,000
OK2BDV	4	17	903
OK1AW	5	18	736
OK1CX	4	16	620
OK1UY	3	14	425
OK1KO	3	12	360
OK1VB	3	8	132
OK2SG	2	3	10
7 mc. OK1HI	17	46	11,970
OK1AEH	7	28	4,025
OK2BDV	8	27	3,185
OK1XQ	6	24	1,500
OK1AW	8	21	1,470
OK1VB	4	24	1,344
OK1KO	6	22	1,316
OK3OTR	6	24	1,260
OK1CX	5	19	888
OK1UY	4	18	618

	STATION	ZONES	COUNTRIES	SCORE
	OK1ZM	2	14	368
	OK1AHA	3	13	354
	OK2MA	2	6	64
	OK1ZW	3	6	27
	OK1OPZ	3	3	12
14 mc.	OK1HI	25	55	25,280
	OK1XQ	22	49	15,336
	OK1SK	16	39	6,160
	OK1AW	15	29	4,180
	OK2BDV	12	28	4,120
	OK1CX	12	25	2,923
	OK1KO	9	25	2,550
	OK1UY	10	25	2,485
	OK1VB	7	23	2,010
	OK2MA	7	21	1,844
	OK1ZM	9	16	975
	OK1AKA	10	16	784
	OK1AHA	5	12	714
	OK1AEH	4	9	390
23 mc.	OK1AW	10	12	770
	OK2BDV	8	11	627
	OK1HI	8	10	594
	OK1CX	4	4	72
	OK1VB	3	3	54
	OK2MA	3	3	36
	OK1AKA	2	2	24



ZE3JP made 103,545 points. Rigs use an 813 and 257B as finals. Receiver is a prewar HRO. Dipoles are used for each band plus a 3-element beam on 10 meters.

	STATION	ZONES	COUNTRIES	SCORE
Denmark				
All Bands	OZ7BG	45	127	114,896
	OZ1W	40	119	53,424
	OZ7G	20	69	16,910
	OZ3PO	14	35	5,145
	OZ2N	9	26	2,800
	OZ5TZ	12	17	986
	OZ8A	6	13	608
	OZ5MJ	2	5	77
3.5 mc.	OZ1W	5	26	2,480
	OZ7BG	3	23	2,210
	OZ7G	3	18	861
	OZ2N	3	14	442
7 mc.	OZ7BG	10	32	6,300
	OZ1W	5	26	1,922
	OZ3PO	5	20	1,125
	OZ7G	4	18	616
	OZ8A	2	7	63
	OZ5TZ	2	6	56
	OZ5MJ	1	3	27
14 mc.	OZ7BG	25	63	35,728
	OZ1W	24	59	14,608
	OZ3LF	20	29	7,546
	OZ7G	13	33	5,566
	OZ2N	9	15	1,296
	OZ3PO	5	20	1,125
	OZ5TZ	10	11	567
	OZ8A	6	9	375
	OZ7ML	6	7	351
	OZ5MJ	1	2	6
28 mc.	OZ7BG	7	9	432
	OZ1W	6	8	252

	STATION	ZONES	COUNTRIES	SCORE
Eire				
All Bands	E19J	17	58	15,975
	E15F	17	21	2,242
3.5 mc.	E19J	4	25	2,059
7 mc.	E19J	5	23	1,428
	E15F	7	5	168
14 mc.	E19J	8	10	1,458
	E15F	4	7	187
28 mc.	E15F	6	9	450
Eire, Northern				
All Bands	G13FJX	21	74	16,150
3.5 mc.	G13FJX	2	18	740
7 mc.	G13FJX	6	26	2,784
14 mc.	G14NU	12	32	7,348
	G13FJX	13	30	3,913
England				
All Bands	G2AJ	61	141	123,422
	G8KP	28	111	53,793
	G2VD	35	101	47,736
	G3FXB	34	95	42,699
	G5JU	34	71	33,810
	G2MI	22	59	15,390
	G3DOG	25	52	15,246
	G2AJB	17	57	12,284
	G8QZ	22	49	8,662
	G2BW	14	30	3,080
	G3AIM	14	23	2,553
3.5 mc.	G5MP	6	30	5,256
	G2VD	4	24	1,708
	G8KP	4	28	2,496
	G3FXB	4	25	1,653
	G2AJ	8	23	1,457
	G5JU	4	21	1,325
	G2MI	3	19	880
	G2AJB	3	14	442
7 mc.	G4CP	13	40	12,826
	G2AJ	11	32	4,171
	G2VD	7	29	4,032
	G5JU	11	23	3,303
	G3FXB	6	24	2,740
	G3GEN	4	26	2,070
	G8KP	5	23	1,596
	G2AJB	4	17	1,302
	G2MI	7	20	1,080
	G2BW	4	16	620
	G4XC	3	10	450
	G3DOG	3	4	72
14 mc.	G2LB	29	62	47,229
	G2BOZ	25	64	41,830
	G2AJ	29	64	35,619
	G8KP	19	60	19,908
	G3DOG	22	48	13,440
	G3FXB	15	33	6,624
	G2VD	15	33	5,904
	G5JU	12	20	4,832
	G2MI	12	20	3,520
	G2AJB	8	24	2,304
	G3EEM	8	8	384
28 mc.	G2AJ	13	22	2,940
	G2VD	9	15	1,320
	G3FXB	9	13	1,056
	G2BW	10	14	936
	G5JU	7	7	294
	G3WP	3	3	30
	G2AJB	2	2	24
Faeroes Island				
14 mc.	OY3IGO	3	11	308
Finland				
All Bands	OH3QU	19	58	17,479
	OH3NY	20	58	17,394
	OH1NK	15	59	13,702
	OH5OE	13	49	9,548
	OH5NF	18	48	7,854
	OH2MC	14	50	6,912
	OH6NR	11	17	3,528
3.5 mc.	OH3NY	4	18	1,738
	OH5NF	3	13	480
	OH5OE	3	9	324
	OH2MC	3	10	234
	OH1NK	2	5	56
7 mc.	OH1NK	5	27	2,944
	OH3QU	6	22	2,212

14 mc.

France
All Bands

3.5 mc.

7 mc.

14 mc.

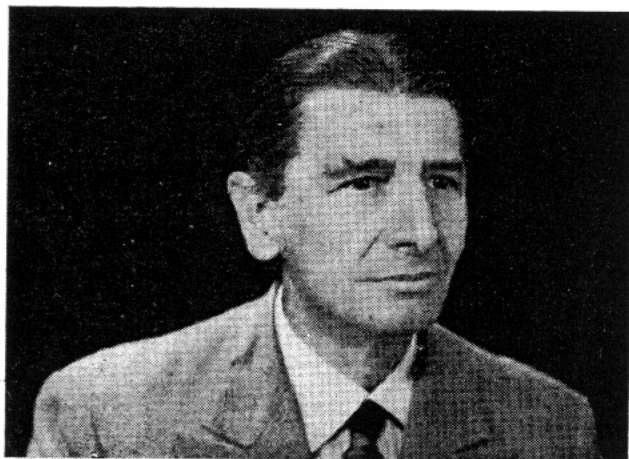
28 mc.

Germany
All Bands

3.5 mc.

7 mc.

	STATION	ZONES	COUNTRIES	SCORE
	I1CJW	27	57	23,605
	I1BUQ	10	43	7,526
	I1ER	5	10	305
3.5 mc.	I1AIV	4	25	2,987
	I1IZ	3	10	169
7 mc.	I1IZ	9	33	6,594
	I1KN	10	32	5,166
	I1AIV	7	27	3,366
	I1NT	9	27	3,312
	I1BUQ	5	27	3,232
	I1BLN	3	23	2,834
	I1CJW	4	14	666
	I1ER	2	7	162
14 mc.	I1KE	19	50	16,422
	I1CJW	23	43	16,104
	I1AIV	22	43	14,585
	I1KN	22	49	14,129
	I1NT	18	48	10,494



LU9EV scored 80,010 points. Two rigs are used, 70 watts into a pair of 800As and 120 watts to an 813. Receivers are SX-42, RCA-77, RME HF-10. Colin has been on the air for 26 years.

	I1IZ	18	41	10,384
	IT1AQS	11	31	4,872
	I1BUQ	5	16	861
	I1ABB	4	10	294
28 mc.	I1IZ	9	12	1,008
	I1NT	7	11	810
	I1KN	4	5	135
	I1ER	3	3	54
Luxembourg				
All Bands	LX1JW	22	51	9,782
Netherlands				
All Bands	PA0UN	51	143	138,710
	PA0VB	26	74	37,100
	PA0NW	12	15	1,242
3.5 mc.	PA0UN	4	24	2,100
	PA0VB	4	20	1,368
7 mc.	PA0UN	9	34	6,364
	PA0VB	6	18	1,560
	PA0VDV	5	11	304
	PA0NW	3	8	187
14 mc.	PA0UN	28	67	40,565
	PA0VB	15	35	12,300
	PA0WAC	12	33	5,040
	PA0PZW	7	13	720
	PA0NW	9	7	464
	PA0LY	4	5	126
23 mc.	PA0UN	10	18	1,820
	PA0VB	1	1	6
Norway				
All Bands	LAGU	45	120	72,105

	STATION	ZONES	COUNTRIES	SCORE
	LA1RD	16	47	11,107
	LA9QB	12	37	6,027
	LA5S	9	33	5,384
	LA2B	18	35	5,194
	LA3ZD	12	33	3,780
	LA9XB	7	23	1,350
	LA4DD	6	18	1,324
	LA9TC	7	19	1,066
3.5 mc.	LA6U	4	25	2,146
	LA9QB	4	19	1,725
	LA2B	2	6	80
	LA5S	2	5	49
7 mc.	LA6U	13	33	4,140
	LA1RD	4	21	2,100
	LA4DD	3	11	462
	LA2B	4	10	322
	LA9TC	2	11	247
	LA5S	2	6	240
	LA9XB	2	10	216
	LA9QB	2	5	119
	LA3ZD	2	5	40
14 mc.	LA6U	24	56	20,640
	LA3Y	11	25	8,568
	LA1RD	12	26	3,990
	LA3ZD	10	28	3,040
	LA2B	12	19	2,015
	LA5S	5	22	1,674
	LA3HA	8	13	1,197
	LA9QB	6	13	589
	LA9XB	5	13	486
	LA9TC	5	8	286
	LA4DD	3	7	200
	LA9T	3	8	110
28 mc.	LA6U	4	6	150

Poland

All Bands	SP3PF	33	107	100,240
	SP1SJ	18	41	5,782
3.5 mc.	SP3PF	4	28	4,704
	SP1SJ	2	4	30
7 mc.	SP3PF	8	32	6,320
	SP1SJ	3	9	156
14 mc.	SP3PF	21	47	27,948
	SP1SJ	9	23	2,080
28 mc.	SP1SJ	4	5	135

Portugal

All Bands	CT15Q	23	48	12,780
-----------	-------	----	----	--------

Roumania

All Bands	YO3RI	39	116	76,880
	YO3RF	43	109	68,096
	YO6VG	10	27	2,388
	YO8RL	6	16	506
3.5 mc.	YO3RI	4	23	2,592
	YO6CA	3	6	189
	YO3RF	3	8	121
7 mc.	YO3RF	8	28	3,672
	YO3RI	5	27	2,848
	YO6VG	6	19	1,150
	YO8RL	3	10	169
14 mc.	YO3RF	27	64	28,665
	YO3RI	20	50	18,340
	YO6VG	4	8	216
	YO8RL	3	6	90
28 mc.	YO3RI	10	16	1,274
	YO3RF	5	9	280

Saarland

All Bands	9S4AX	20	68	19,712
3.5 mc.	9S4AX	4	21	1,425
	9S4BF	3	7	60
7 mc.	9S4AX	3	18	1,239
14 mc.	9S4AX	13	29	4,536

Sardinia

All Bands	IS1AHK	15	33	4,560
-----------	--------	----	----	-------

Scotland

All Bands	GM3EST	11	40	8,160
	GM3CSM	21	37	7,134

(Continued on page 70)

Last devoted CQ's the Se would make Part devoted amateur of the the cor 1-3 (C The Scores the nur worked. to page This of many propaga to date draw th tables r LUF Cu lon At the casting only a li disturba every 27 sunspot daily co then pro idea of v be like Nelson's be used ditions. I ditions f the CW during a conditions to occur likely—po looks as i the Contes past two y occurred In any to the pr to August mation. l. "Effects J. H. N



STANDARD OF THE WORLD FOR QUALITY HEADSETS

the Only Personal Part of Any Communication System

for a world of... LISTENING COMFORT



***MONOSET** (magnetic) ***DYNASET** (dynamic)

The modern styling, dependability and superior performance of these under-chin TELEX headsets have made old fashioned headphones obsolete. With more highs and lows of both music and speech, they are the delight of radio and TV monitors.



***TWINSET**

This lightweight 1.6 oz. TELEX Twinset pipes signal directly into the ear, blocking out background noises and banishing listening fatigue. Magnetic.

Wearing a lightweight TELEX headset with no pressure on the ears and all background noise blocked out, you're all set for hours of traffic, DX or just plain chewing the rag. You'll never again wear an old fashioned headphone after you try one of the fatigue-free, featherweight TELEX headsets.

*Trade Mark



For complete information on any of the above headsets, write

TELEX

ELECTRO-ACOUSTIC DIV.

Department 15-B • St. Paul 1, Minn.

In Canada

ATLAS RADIO CORP., Toronto

TELEX
HEARING AT ITS BEST

RIDER · Tek-File
The EASY way to service tv receivers!



NOW packs-1-56

JOHN F. RIDER

Publisher, Inc.
480 Canal Street, New York 13, N. Y.

WANTED

WE NEED YOUR SURPLUS ELECTRONIC EQUIPMENT

WE PAY TOP \$\$\$ FOR:

- RADIO RECEIVERS
 - TRANSMITTERS
 - ARC-1
 - ARC-3
 - ART-13
 - CONTROL BOXES
 - INDICATORS
 - CLAMPS
 - PLUGS
 - CORDS
 - RELAYS
 - TELEPHONE MATERIALS
 - AN CONNECTORS
 - WE BUY ANYTHING!
- WRITE. WIRE TODAY! TELL US WHAT YOU HAVE
TALLEN CO., Inc., Dept. CQ
159 Cariton Ave. Brooklyn 5, N. Y.

DX CONTEST

(from page 30)

	STATION	ZONES	COUNTRIES	SCORE
3.5 mc.	GM3EST	2	6	88
7 mc.	GM3EST	7	33	5,820
14 mc.	GM3CSM	18	32	5,000
	GM3EST	2	1	18
28 mc.	GM3CSM	8	9	391
Sweden				
All Bands	SM3AKM	31	92	71,094
	SM5AQV	34	104	65,274
	SM5WI	26	81	51,360
	SM6ID	23	99	34,526
	SM7ACO	27	75	29,070
	SM5AQW	24	65	26,344
	SM3LX	26	52	22,854
	SM5CO	24	54	22,620
	SM3ARE	16	52	20,400
	SM7QY	25	76	19,796
	SM5DZ	10	66	17,860
	SM5ANY	21	59	17,440
	SM7AML	18	65	17,264
	SM5AUP	23	45	15,162
	SM5AOI	15	51	13,794
	SM5ARL	7	27	2,074
	SM5EC	9	26	1,500
	SM5AFU	0	24	1,170
	SM6AFK	4	10	238
3.5 mc.	SM5DZ	4	26	2,370
	SM5AQV	4	24	2,212
	SM7ACO	3	24	2,160
	SM6ID	3	28	1,953
	SM3AKM	3	20	1,127
	SM7AML	3	15	648
	SM7QY	3	19	616
	SM5EC	2	13	435
	SM5ARL	2	11	208
	SM3LX	1	1	2
7 mc.	SM5AQV	8	28	4,176
	SM5AOI	6	29	3,850
	SM5DZ	4	25	3,625
	SM5ANY	7	29	3,420
	SM5AQW	5	23	1,820
	SM7QY	6	22	1,624
	SM3EP	4	19	1,541
	SM6ID	4	22	1,534
	SM5MX	5	18	1,035
	SM5CO	3	16	1,026
	SM7AML	3	19	946
	SM3AKM	4	14	684
	SM3LX	4	12	400
	SM7ACO	4	8	264
	SM5WI	3	10	234
	SM5AFU	3	9	204
	SM6AFK	3	9	180
	SM3ARE	2	8	80
	SM7BEO	1	4	30
	SM5AUP	2	2	16
14 mc.	SM5WI	23	71	43,428
	SM3AKM	24	58	40,262
	SM5AQV	22	52	20,572
	SM3ARE	14	44	16,936
	SM3LX	19	37	14,616
	SM5AQW	19	42	14,091
	SM5AUP	21	43	14,080
	SM5CO	21	38	13,924
	SM7ACO	20	43	11,529
	SM5ACB	16	36	9,256
	SM6ID	18	39	7,125
	SM3ACP	15	39	6,804
	SM3EP	14	28	6,132
	SM7QY	16	35	5,610
	SM7AML	12	31	5,547
	SM5ANY	14	30	5,412
	SM7TQ	14	26	4,600
	SM6DA	13	33	4,600
	SM5AOI	9	22	3,069
	SM3FT	5	18	1,288
	SM5AUN	7	11	1,080

The Contest Committee wishes to apologize for the following error in Phone Section Results tabulation: Under NORTH AMERICA—Single Operator Stations—

The listing "14 mc. W2KZE 15 22 2405" should have read "28 mc. W2KZE 15 22 2405"

Swit
AI
3.5
7
14
28
Spain
All
3.5
7
P
For
See
Standa
Phone
Instru
Asst
Line C
Line C
POWER
output
for con
ternally
PE-157
from B
1.4 V.
External
BB-54
DYNAM
450 V
output 2
Input
14 V. DC
12 V. DC
12 V. DC
14 V. DC
14 V DC
14 V. DC
12 or 24
12 or 24
12 or 24
12 V. DC
28 V. DC
28 V. DC
ADDRESS

ES SCORE
88
5,820
5,000
18
391

71,094
65,274
51,360
34,526
29,070
26,344
22,854
22,620
20,400
19,796
17,860
17,440
17,264
15,162
13,794
2,074
1,500
1,170
238
2,370
2,212
2,160
1,953
1,127
648
616
435
208
2
4,176
3,850
3,625
3,420
1,820
1,624
1,541
1,534
1,035
1,026
946
684
400
264
234
204
180
80
30
16
43,428
40,262
20,572
16,936
14,616
14,091
14,080
13,924
11,529
9,256
7,125
6,804
6,132
5,610
5,547
5,412
4,600
4,600
3,069
1,288
1,080

STATION	ZONES	COUNTRIES	SCORE	STATION	ZONES	COUNTRIES	SCORE		
SM5ARI	5	16	945	EA4CR	8	21	1,682		
SM5EC	7	13	620	EA3FK	2	13	390		
SM5DZ	2	15	527	EA1BZ	3	1	20		
SM5AFU	3	15	396	EA3FL	28	64	48,300		
SM6AFK	1	1	4	EA1AB	15	39	19,140		
28 mc. SM6ID	8	10	648	EA3GF	17	29	10,626		
SM3LX	2	2	24	EA5BD	16	30	4,876		
Switzerland				EA3CK	14	26	2,800		
All Bands	HB9EU	32	48	15,840	EA4CR	8	28	2,196	
	HB9JK	20	53	11,315	EA5DF	7	15	1,892	
	HB9CI	15	37	4,108	EA3FK	7	11	504	
3.5 mc.	HB9EU	4	12	704	EA1BZ	5	11	330	
	HB9JK	4	13	408	EA3FL	11	18	3,045	
	HB9CI	1	4	20	EA4CR	12	15	1,512	
7 mc.	HB9KX	4	24	2,436	EA1AB	4	4	312	
	HB9JK	5	14	855	Trieste				
	HB9CI	4	11	330	All Bands	I1NU	22	72	28,482
	HB9EU	2	2	16	I1BCB	20	50	10,920	
14 mc.	HB9EU	16	22	4,446	I1NU	4	22	2,002	
	HB9MU	7	23	2,370	I1NU	6	22	2,072	
	HB9JK	7	22	2,204	I1BCB	8	23	1,736	
	HB9CI	6	17	844	I1NU	12	28	6,080	
28 mc.	HB9EU	10	12	814	I1BCB	12	27	3,900	
	HB9CI	4	5	135	Wales				
	HB9JK	4	4	80	All Bands	GW3JI	18	70	21,032
Spain					GW3GXL	13	44	6,270	
All Bands	EA3FL	55	136	167,316	GW3HJR	9	41	5,450	
	EA1AB	27	66	49,941	GW3JI	3	21	1,416	
	EA4CR	31	80	22,755	GW3HJR	2	11	234	
	EA5DF	15	37	6,062	GW3GXL	2	7	81	
	EA3FK	9	24	1,782	GW3JI	6	25	2,821	
	EA1BZ	6	14	540	GW3GXL	4	17	903	
3.5 mc.	EA4CN	6	29	4,795	GW3HJR	2	14	480	
	EA3FL	4	20	1,344	GW3ZV	29	71	65,200	
	EA4CR	3	16	570	GW3HGB	13	24	3,219	
7 mc.	EA3FL	12	34	8,740	GW3JI	9	24	2,937	
	EA1AB	8	22	4,500	GW3GXL	7	20	1,566	
	EASDF	8	22	4,170	GW3HJR	5	16	1,281	

**GOING MOBILE?
PE-101C DYNAMOTOR**

For 6 Volt Conversion
See August, '52 CQ

85 KC IF COIL—7267
for BC-453\$1.50
BFO—85 KC75¢
1415 KC—IF\$1.50 ea.
TU-7-8-9-10-26 for BC-191/BC-375
Used\$3.95

AERIAL WIRE—Phosphorus Bronze
#16 Stranded, 200 lb. test. Weather-
proof. 150 ft. on Reel. RL-3 with
Clips\$1.50
TELEPHONE WIRE: 3 Cond. copper &
steel, 525 ft.\$4.75

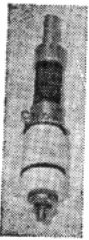
JUST WHAT YOU NEED...

Standard Test Leads 4" x 1 1/2" Prods. Pair 39c—3 f/\$1.00
Phone Plug—Nickel Plated, Screw Terminals. Ea.: 39c—3 f/\$1.00
Instrument Knobs—Bar, Octagon, Rd., Set Screw, Skirts,
Asst. 10 f/\$1.00
Line Cord—Bro. Rubber 7 Ft., Molded Rubber Plug.
Ea. 29c—4 f/\$1.00
Line Cord—Black Rubber 6 ft., Angle Molded Plug.
Ea.: 39c—3 f/\$1.00

POWER SUPPLIES: VIBRATOR TYPE—6 V. DC Input;
output 230 V. DC 50 MA.—not filtered—w/Tube. Ideal
for command receiver operation as receiver is filtered in-
ternally. Size: 4 1/2" x 4 1/4" x 3 1/2".\$4.95
PE-157 POWER SUPPLY—2 V. Vibrator Supply, operates
from BB-54 2 V. Battery mounted in Case. Output voltage
1.4 V. 1/2 Amp 125 V. 50 MA. Less Battery, Speaker &
External Power Cord—with Vibrator.....\$4.95
BB-54 2 Volt Dry Battery.....\$2.95

DYNAMOTORS:

DYNAMOTOR and BLOWER:	9 Volts DC input;	output	450 Volts 60 MA. 4500 RPM. At 6 Volts DC input;	output
output 260 Volts 65 MA. 3000 RPM.....				\$4.95
Input:	Output:	Stock No.:	Price:	
14 V. DC	600 V. 300 MA.	BD-86	\$ 9.95	
12 V. DC	220 V. 70 MA.	DM-24	6.95	
12 V. DC	220 V. 100 MA.	DM-18	4.95	
14 V. DC	375 V. 150 MA.	DM-375	8.95	
14 V. DC	330 V. 135 MA.	DM-330	7.95	
14 V. DC	500 V. 500 MA.	PE-59	14.95	
12 or 24 V. DC	275 V. 110 MA.	USA/0516	3.95	
12 or 24 V. DC	440 V. 200 MA.			
	225 V. 100 MA.	D-104	14.95	
12 or 24 V. DC	500 V. 50 MA.	USA/0515	3.95	
12 V. DC	250 V. 50 MA.	DM-25	8.95	
28 V. DC	250 V. 60 MA.	DM-32 (Used)	2.95	
28 V. DC	250 V. 60 MA.	PE-86	5.95	



ANTENNA EQUIPMENT
MP-132 MAST BASE—(Illustrated) 1" heavy
coil spring, 2" insulator. Overall length: 11 1/2".
Weight: 2 3/4 lbs. Price.....\$3.95
MP-48 MAST BASE—Insulated type with heavy
coil spring. Requires 1 3/8" mounting hole.
Weight 11 lbs.....\$4.95
MP-57 BASE—Insulated type with heavy coil
spring and 5" dia. insulator. Requires 1 3/8"
hole for mtg. Weight: 9 lbs.....\$5.95
MAST SECTIONS FOR ABOVE BASES:
Tubular steel, copper coated, painted, in 3 ft.
sections, screw-in type. MS-53 can be used to
make any length with MS-52-51-50-49 for
taper. Any section.....50c each
Larger Diameter Sections: MS-55-54.....\$1.25 each

TRANSFORMERS AND CHOKES:
TRANSFORMERS—110 V. 60 CYCLE PRIMARIES:
325-0-325 V. 50 MA.—6.3 V. 2.5 A 6.3 V. .6A
(Rect. 6 x 5); Half Shell—2 7/8" x 3 3/8" x 3"
No. T-23-28\$2.75
6.3 V. 1 Amp.....\$1.25 24 V. 1 Amp.....\$1.95
24 V. 1/2 Amp..... 1.50 24 V. 6.5 Amp..... 5.95
6-24 or 30 Volts 8 Amp..... 5.95
Two 12 V. 4 A windings, gives 12 V. 8 A or
24 V. 4 A..... 5.95
6.3 Volt 6 Amp—6.3 Volt 4 Amp..... 2.25
400 VCT/70 MA—5 V. 2 A—6.3 V. 4 A..... 3.35
700 VCT/200 MA—6.3 V. 4 A; 6.3 V. 4 A; 5 V. 3 A 4.95
700 VCT/120 MA—5 V. 3 A; 6.3 V. 4 A;
32 V. 2 A..... 4.75
490 VCT/60 MA—5 V 2 A; 6.3 V. 4 A;
6.3 V. 2 A..... 3.25
460 VCT/90 MA—5 V. 3 A; 6.3 V. 4 A..... 3.75
CHOKES:
5 Henries—150 MA, 85 ohms DC—Res. Cased 1.95
8 Henries—500 MA, 80 ohms, 5000 V. Ins..... 8.95
7.5 Henries—400 MA, 60 ohms, 5000 V. Ins..... 6.95
6.2 Henries—300 MA, 82 ohms, 5000 V. Ins..... 4.95

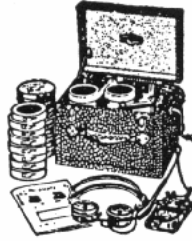
or the
ation:
erator

2405"
2405"

ALL PRICES ARE F.O.B., LIMA, OHIO • 25% DEPOSIT ON C.O.D. ORDERS

EASY TO LEARN CODE

It is easy and pleasant to learn or increase speed the modern way—with an Instructograph Code Teacher. Excellent for the beginner or advanced student. A quick, practical and dependable method. Available tapes from beginner's alphabet to typical messages on all subjects. Speed range 5 to 40 WPM. Always ready, no QRM, beats having someone send to you.



ENDORSED BY THOUSANDS!

The Instructograph Code Teacher literally takes the place of an operator-instructor and enables anyone to learn and master code without further assistance. Thousands of successful operators have "acquired the code" with the Instructograph System. Write today for full particulars and convenient rental plans.

INSTRUCTOGRAPH COMPANY

Dept. C., 4701 SHERIDAN RD., CHICAGO 40, ILL.

Master Mobile

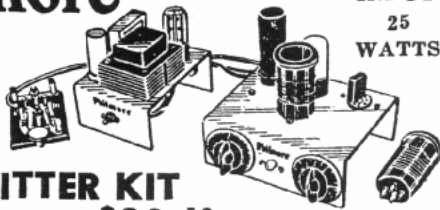
"THE FINEST" ANTENNAS and MOUNTS
EVERY TYPE MOBILE CAR or TRUCK
PRECISION MANUFACTURED
POPULARLY PRICED
INSIST ON "MASTER"
AT LEADING JOBBERS

Master Mobile Mounts, Inc.

P. O. BOX 1817 · LOS ANGELES 36, CALIFORNIA
WAREHOUSE AND SHIPPING ADDRESS: 1306 BOND STREET

Philmore

MODEL
NT-200



POWER
INPUT
25
WATTS

NOVICE TRANSMITTER KIT

INCLUDING POWER
SUPPLY KIT **\$29.40**

AMATEUR
NET COST

EASY TO ASSEMBLE—EASY TO OPERATE! 2 Bands: 3.7-3.75 Mc and 26.96-27.23 Mc. All necessary parts, Tubes, Key, 2 plug-in coils, pictorial diagrams, included. See this terrific new kit at your local jobber or write for literature to Dept. C-10.

PHILMORE MFG. CO., INC. 113 University Place
New York 3, N. Y.

Did You Ever?

Seriously consider firing up on 220 megacycles? What stopped you? Equipment too complex? But is it? We don't think so, at least not the rig described in the November "Special Issue" of CQ.

Be sure to get your copy—a subscription is the easiest way.

STATION	ZONES	COUNTRIES	SCORE
Yugoslavia			
All Bands YU1AD	24	91	40,135

AFRICA—

Single Operator Stations

Algeria			
All Bands	FA8DA	32	82
	FA9RZ	29	88
	FA3VV	20	53
3.5 mc.	FA9RZ	5	20
	FA8DA	4	14
7 mc.	FA8DA	5	20
	FA9RZ	6	19
	FA3VV	4	18
14 mc.	FA8DA	14	39
	FA9RZ	12	40
	FA3VV	16	35
28 mc.	FA8DA	8	9
	FA9RZ	6	9

Belgian Congo			
All Bands	OQ5RA	36	77

Canary Islands			
All Bands	EA8BF	26	54

Egypt			
All Bands	SU1GO	15	37

French Equatorial Africa			
14 mc.	FQ8AE	17	40

French West Africa			
All Bands	FF8AG	23	43
	FF8JC	31	61
7 mc.	FF8JC	6	11
14 mc.	FF8AC	19	41
	FF8AG	13	27
	FF8JC	12	26
28 mc.	FF8AG	10	16

Guinea, Portuguese			
14 mc.	CR5AD	14	23

Kenya Colony			
All Bands	VQ4RF	15	24

Madagascar			
14 mc.	FB8BB	16	25

Madeira Islands			
14 mc.	CT3AA	13	29

Morocco, French			
All Bands	CN8EG	30	76
14 mc.	CN8EG	20	53
	CN8AG	10	35
28 mc.	CN8EG	10	23

Morocco, Spanish			
All Bands	EA9AP	22	59

Mozambique			
All Bands	CR7AF	16	26

Nyasaland			
14 mc.	ZD6DU	7	14
All Bands	VQ2GW	50	85

Rhodesia, Northern			
All Bands	VQ2GW	50	85

Rhodesia, Southern			
All Bands	ZE3JP	46	71
	ZE3JO	17	32
3.5 mc.	ZE3JP	2	1
7 mc.	ZE3JP	10	8
14 mc.	ZE3JP	26	43
	ZE4JC	23	38
	ZE2JH	10	19
	ZE3JO	12	20
28 mc.	ZE3JP	8	19
	ZE3JO	5	12

So
Sw
Tan
Uni
A
3
1
28
ASI
Ceyl
14
Hong
14
India
All
By
yo
ra
Th
bin
ma
CQ
67
Encl
Nam
Add
City
Year

ES SCORE

40,135

83,334
70,902
28,178
2,775
2,484
5,512
4,450
3,586
16,483
12,480
11,373
1,190
1,155

124,752

58,400

9,464

26,505

43,362

34,776

1,513

36,240

14,600

7,068

7,592

16,539

8,346

9,835

9,870

176,278

92,783

12,510

12,936

75,006

12,642

1,960

85,590

85,590

103,545

7,203

36

1,764

42,159

15,006

2,929

2,688

4,428

1,071

STATION	ZONES	COUNTRIES	SCORE	STATION	ZONES	COUNTRIES	SCORE
Southwest Africa 14 mc. ZS3Q	17	20	10,804	7 mc. VU2JP	7	11	684
				14 mc. VU2JP	20	45	30,485
				VU2LJ	9	9	396
Swaziland All Bands ZS7C	24	33	10,830	28 mc. VU2LJ	1	1	2
Tangier Zone All Bands EK1CW	23	45	13,804	Iraq All Bands YI3ECU	11	35	21,514
14 mc. KT10C	9	22	4,371	Israel All Bands 4X4BX	57	166	444,126
14 mc. EK1CW	7	14	1,071	4X4RE	51	145	441,196
Union of South Africa All Bands ZS6OW	48	84	182,952	4X4DF	27	95	119,194
3.5 mc. ZS5U	51	77	122,112	4X4BM	24	64	47,608
7 mc. ZS5U	4	3	126	4X4RE	4	24	6,916
14 mc. ZS5U	11	17	6,692	4X4BX	4	19	3,243
ZS6OW	9	10	4,731	4X4DF	4	17	2,436
ZS6OW	27	48	62,325	4X4BM	1	2	9
ZS5U	20	32	22,724	4X4RE	17	45	42,284
ZS5AM	28	36	18,752	4X4RE	12	39	34,170
ZS6ACD	21	27	10,128	4X4DF	4	27	9,176
ZS4AK	14	20	4,488	4X4BM	3	12	855
ZS6OW	12	26	11,628	14 mc. 4X4RE	25	59	102,396
ZS5U	16	25	10,660	4X4BX	27	71	97,804
				4X4DF	14	41	28,270
				4X4BM	13	37	22,236
				4X4BR	6	24	12,060
				28 mc. 4X4BX	9	31	6,840
				4X4RE	10	23	3,795
				4X4BM	7	13	900
				4X4DF	5	10	765
				Japan 14 mc. JA4AI	21	30	20,451
				Malaya 14 mc. VS2DD	16	25	5,371
				Saudi-Arabia 14 mc. HZ1HZ	11	36	12,408
				Singapore 14 mc. VS1DU	16	13	2,697

ASIA—

Single Operator Stations

Ceylon 14 mc. VS7NG	24	43	28,073	Japan 14 mc. JA4AI	21	30	20,451
Hongkong 14 mc. VS6BA	21	43	29,952	Malaya 14 mc. VS2DD	16	25	5,371
	16	29	12,735	Saudi-Arabia 14 mc. HZ1HZ	11	36	12,408
	16	21	6,105	Singapore 14 mc. VS1DU	16	13	2,697
India All Bands VU2JP	27	56	42,081				
	10	10	460				

BOUND

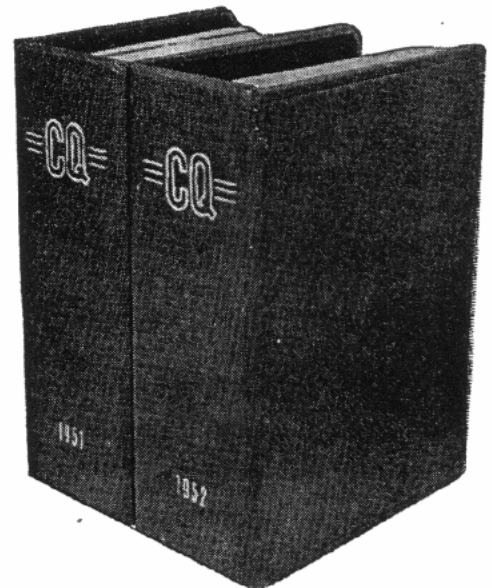
To Give Greater Value

By keeping your copies of "CQ" in a BINDER, you have the finest reference library on ham radio right at your finger tips.

This handsome, red fabricord, steel reinforced binder holds a full year's copies of "CQ." Each magazine can be inserted or removed at will.

Price **\$2.50** postpaid*

*(Foreign Orders add 25c per binder)



CQ Magazine
67 West 44th St., New York 36, N. Y.

Enclosed find \$..... for binders

Name Call

Address

City Zone State

Year to be stamped Heading: CQ, Plain

mobile specials

10-METER WHIP ANTENNA

96 inches tall, made of chrome silicon steel of exceptionally high tensile strength. Bend it to 90° and it will still come back to original upright position. Taper ground with corrosive resistant finish. For base below, or any standard base. 96" Whip Antenna - Regularly \$6.75
SPECIAL (Via Express Only) 3.75

SWIVEL BASE AND SPRING

Oil-tempered heavy spring steel - tough enough to take it! Not affected by shock, extreme temperature or vibration. Flexible lead though center of spring maintains constant electrical impedance. Instant response to contact with overhead obstructions. Has 3/8" threaded fitting to receive mast stud.

Swivel Base & Spring - Regularly \$7.25
SPECIAL (Via Express Only) 4.00

WHIP AND BASE COMBINATION

Another great Arrow Special. Order both whip and base above, together and save still more!

COMBINATION ABOVE, SPECIAL 7.00

MALLARD HI-Q 20 Loading Coil, Net.... 8.95

MALLARD HI-Q 75 Loading Coil, Net..... 7.95

ARROW ELECTRONICS, INC.
 82 CORTLANDT ST., NEW YORK 7, N. Y., DIGBY 9-4714

3 WIRE CONTROL CABLE

Two No. 16, Six No. 20 tinned, stranded, copper, rubber insulated coded leads. Waterproof rubber jacket. Woven copper armor shield overall. Wt. 16 lbs./100 ft. Lengths to 400 ft. **LOW PRICE FOB warehouse.** Minimum order 100 ft. Shipment is made by Railway Express—shipping charges collect. **5c ft.**

TRANS-WORLD RADIO-TELEVISION CORP.
 6639 S. ABERDEEN ST. CHICAGO 21, ILL.
 Phone: AUstin 7-4538

We Carry a Complete Line of Amateur Equipment including:

National • Hallicrafters
 E. F. Johnson Co. • Bud • Barker-Williamson, etc.

VARIETY ELECTRIC CO., INC.

468-470 Broad St.

Newark 2, N. J.

"Why do you INSIST on a HALLIDRAFTERS RECEIVER Leo?"

"Because HALLIDRAFTERS gives me the most for my MONEY!"

WORLD RADIO LABORATORIES
 744 WEST BROADWAY
 COUNCIL BLUFFS, IOWA
 WRITE for FREE CATALOG

OCEANIA—

Single Operator Stations

STATION	ZONES	COUNTRIES	SCORE	
Australia				
All Bands	VK2GW	31	43	49,284
	VK2AND	18	21	4,758
3.5 mc.	VK2GW	4	4	96
7 mc.	VK2DI	14	15	7,105
	VK2GW	7	6	3,588
14 mc.	VK2PV	25	47	25,056
	VK2GW	18	30	17,952
	VK2AND	16	19	4,235
28 mc.	VK2GW	2	3	20
	VK2AND	2	2	4
All Bands	VK3HT	18	20	4,826
	VK3XB	19	16	3,535
	VK3PG	6	6	192
7 mc.	VK3HT	4	4	96
	VK3PG	3	3	42
	VK3XB	3	2	5
14 mc.	VK3AZW	20	32	30,680
	VK3HT	14	16	3,450
	VK3XB	16	14	3,000
	VK3KS	4	5	117
	VK3PG	3	3	54
28 mc.	VK3ABA	2	2	72
14 mc.	VK5RX	8	8	2,896
All Bands	VK6RU	27	40	22,579
All Bands	VK7LZ	24	23	7,708
Hawaii				
All Bands	KH6IJ	60	81	272,271
	KH6MG	61	78	165,132
	KH6AEX	50	72	107,482
3.5 mc.	KH6MG	9	9	2,124
	KH6IJ	8	7	1,585
	KH6AEX	4	4	152
7 mc.	KH6IJ	9	8	9,977
	KH6MG	10	9	4,826
	KH6AEX	10	8	523
14 mc.	KH6IJ	29	50	68,730
	KH6AEX	29	54	64,159
	KH6LG	28	42	42,070
	KH6MG	28	47	37,200
	KH6PM	25	39	36,352
	KH6AAQ	22	31	29,468
28 mc.	KH6IJ	14	16	9,977
	KH6MG	14	13	8,586
	KH6AEX	7	6	780
Marianas Islands				
All Bands	W0DEA/KG6	28	33	14,457
14 mc.	KGGAAE	24	54	51,324
	W0DEA/KG6	22	27	8,526
28 mc.	W0DEA/KG6	6	6	756
New Zealand				
All Bands	ZL1MQ	44	43	80,823
	ZL1QW	17	18	2,800
	ZL1HY	8	7	1,785
3.5 mc.	ZL1HY	4	3	343
	ZL1MQ	7	5	312
7 mc.	ZL3LL	15	21	16,128
	ZL3OX	11	13	10,992
	ZL1MQ	7	6	3,666
	ZL1QW	i	1	2
	ZL1HY	1	1	2
14 mc.	ZL1MQ	21	24	11,925
	ZL1QW	14	15	2,175
	ZL3CP	8	8	1,680
	ZL1HY	1	1	6
28 mc.	ZL1MQ	9	8	6,052
	ZL1HY	2	2	264
	ZL1QW	2	2	16
Papua				
All Bands	VK9XK	48	52	93,700

Thanks to the following for sending in logs for checking purposes: W5KWY, W5FFW, W7CNM, W8UEY, W8HA, KL7AI, PY2ACT, ZS2Y, VK2AMV, VK2OW, ZLIADA, ZL2AI, G6BB, SM5IZ, SM6AMR, SM5RC, SM6RS, SM4BTF, SM5BAD, SM7AAZ, SM7VX, SM5APG, and SM5YS.

Two eliminat filter po been ad through Type 4 and 40 tive filter in mobile with the the volta Another is design spurious TV receiv through-c ing and 600 volts and may cycles a.c. Complet pass Capa Products Mass.

A new, especially THORDAI complemen crystal osc simple ins and fast. The Novice